

ZDHHC5 Antibody

Catalog No: #43969



Package Size: #43969-1 50ul #43969-2 100ul

Orders: order@signalwayantibody.comSupport: tech@signalwayantibody.com

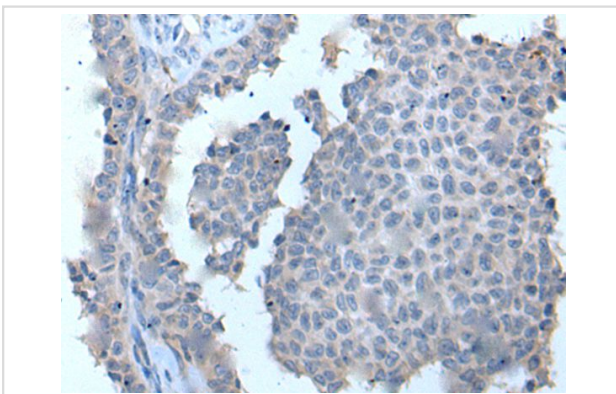
Description

Product Name	ZDHHC5 Antibody
Host Species	Rabbit
Clonality	Polyclonal
Purification	Antigen affinity purification
Applications	IHC
Species Reactivity	Hu Ms Rt
Specificity	The antibody detects endogenous levels of total ZDHHC5 protein.
Immunogen Type	peptide
Immunogen Description	Synthetic peptide of human ZDHHC5
Target Name	ZDHHC5
Other Names	DHHC5; ZNF375
Accession No.	Swiss-Prot#: Q9C0B5NCBI Gene ID: 25921
Concentration	0.1mg/ml
Formulation	Rabbit IgG in pH7.4 PBS, 0.05% NaN ₃ , 40% Glycerol.
Storage	Store at -20°C

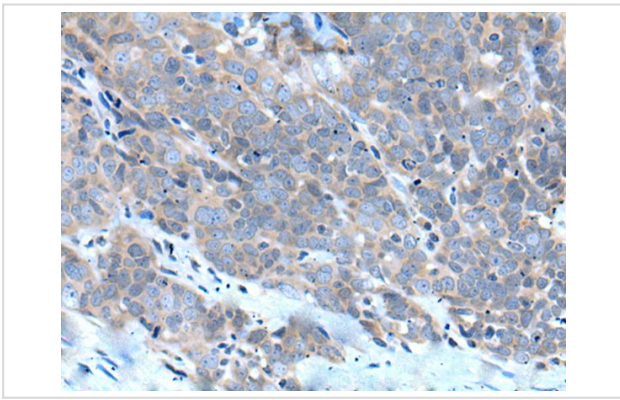
Application Details

Immunohistochemistry: 1: 20-100

Images



The image on the left is immunohistochemistry of paraffin-embedded Human ovarian cancer tissue using ZDHHC5 Antibody at dilution 1/20, on the right is treated with synthetic peptide. (Original magnification: x200)



The image on the left is immunohistochemistry of paraffin-embedded Human thyroid cancer tissue using ZDHHC5 Antibody at dilution 1/20, on the right is treated with synthetic peptide. (Original magnification: x200)

Background

Palmitoyl acyltransferase for the G-protein coupled receptor SSTR5. Also palmitoylates FLOT2 (By similarity).

Note: This product is for in vitro research use only and is not intended for use in humans or animals.