

ZMYM2 Antibody

Catalog No: #43970

Package Size: #43970-1 50ul #43970-2 100ul

Orders: order@signalwayantibody.com

Support: tech@signalwayantibody.com

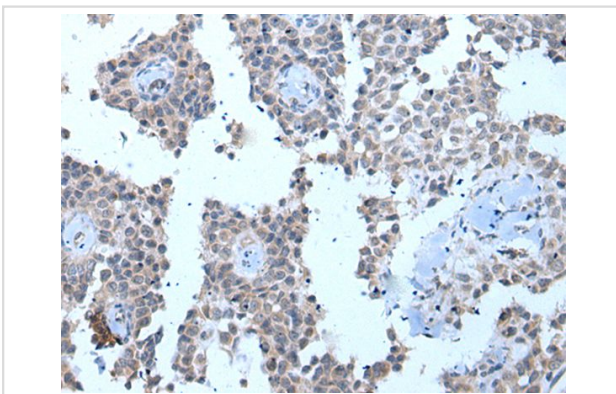
Description

Product Name	ZMYM2 Antibody
Host Species	Rabbit
Clonality	Polyclonal
Purification	Antigen affinity purification
Applications	IHC
Species Reactivity	Hu Ms
Specificity	The antibody detects endogenous levels of total ZMYM2 protein.
Immunogen Type	peptide
Immunogen Description	Synthetic peptide of human ZMYM2
Target Name	ZMYM2
Other Names	FIM; MYM; RAMP; SCLL; ZNF198
Accession No.	Swiss-Prot#: Q9UBW7NCBI Gene ID: 7750
Concentration	0.4mg/ml
Formulation	Rabbit IgG in pH7.4 PBS, 0.05% NaN ₃ , 40% Glycerol.
Storage	Store at -20°C

Application Details

Immunohistochemistry: 1: 20-100

Images



The image on the left is immunohistochemistry of paraffin-embedded Human ovarian cancer tissue using ZMYM2 Antibody at dilution 1/20, on the right is treated with synthetic peptide. (Original magnification: x200)

Background

The protein encoded by this gene is a zinc finger protein that may act as a transcription factor. The encoded protein may be part of a BHC histone deacetylase complex. Translocation of this gene with the fibroblast growth factor receptor-1 gene (FGFR1) results in a fusion gene, which may be a cause of stem cell leukemia lymphoma syndrome (SCLL). Several transcript variants encoding the same protein have been found for this gene.?

Note: This product is for in vitro research use only and is not intended for use in humans or animals.