

## YY2 Antibody

Catalog No: #43974

Package Size: #43974-1 50ul #43974-2 100ul

Orders: order@signalwayantibody.com

Support: tech@signalwayantibody.com

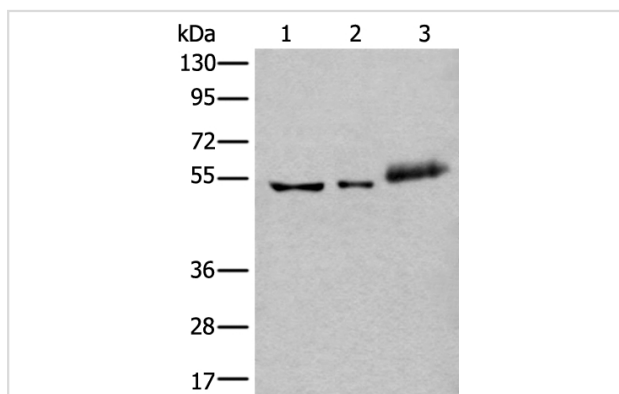
## Description

Product Name	YY2 Antibody
Host Species	Rabbit
Clonality	Polyclonal
Purification	Antigen affinity purification
Applications	WB
Species Reactivity	Hu Ms
Specificity	The antibody detects endogenous levels of total YY2 protein.
Immunogen Type	peptide
Immunogen Description	Synthetic peptide of human YY2
Target Name	YY2
Other Names	ZNF631
Accession No.	Swiss-Prot#: O15391NCBI Gene ID: 404281
Calculated MW	41kd
Concentration	2.3mg/ml
Formulation	Rabbit IgG in pH7.4 PBS, 0.05% NaN <sub>3</sub> , 40% Glycerol.
Storage	Store at -20°C

## Application Details

Western blotting: 1:500-2000

## Images



Gel: 8%SDS-PAGE

Lysate: 40 µg, Lane 1-3: Hela cell/B&amp;E-Mouse kidney tissue and Human colorectal cancer tissue lysates,

Primary antibody:YY2 antibody at dilution 1/800,

Secondary antibody: Goat anti rabbit IgG at 1/8000 dilution,

Exposure time: 5 minutes

## Background

The protein encoded by this gene is a transcription factor that includes several Kruppel-like zinc fingers in its C-terminal region. It possesses both activation and repression domains, and it can therefore have both positive and negative effects on the transcription of target genes. This gene has an intronless coding region, and it appears to have arisen by retrotransposition of the related YY1 transcription factor gene, which is located on

chromosome 14.

---

Note: This product is for in vitro research use only and is not intended for use in humans or animals.