

Lamin B2 antibody

Catalog No: #22922



Orders: order@signalwayantibody.com

Support: tech@signalwayantibody.com

Description

Product Name	Lamin B2 antibody
Host Species	Rabbit
Clonality	Polyclonal
Purification	Purified by antigen-affinity chromatography.
Applications	WB IHC
Species Reactivity	Hu
Immunogen Type	Recombinant protein
Immunogen Description	Recombinant protein fragment contain a sequence corresponding to a region within amino acids 221 and 470 of Lamin B2
Target Name	Lamin B2
Accession No.	NCBI Gene ID: 84823NCBI mRNA#: NM_032737NCBI Protein#: NP_116126
Concentration	1mg/ml
Formulation	Supplied in 0.1M Tris-buffered saline with 10% Glycerol (pH7.0). 0.01% Thimerosal was added as a preservative.
Storage	Store at -20°C for long term preservation (recommended). Store at 4°C for short term use.

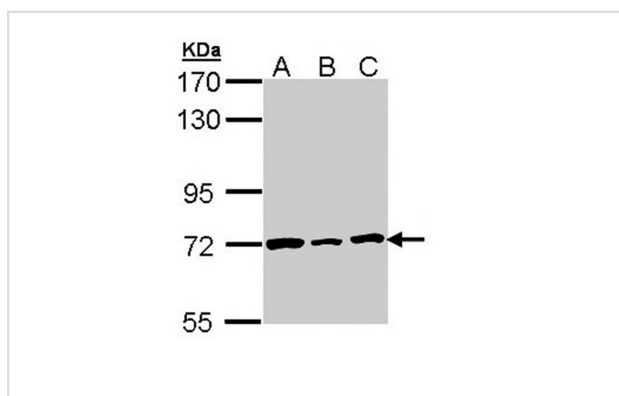
Application Details

Predicted MW: 68kd

Western blotting: 1:500-1:3000

Immunohistochemistry: 1:100-1:250

Images



Sample (30 ug of whole cell lysate)

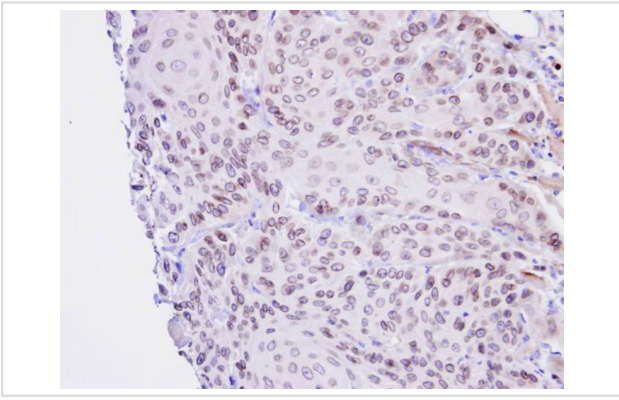
A: H1299

B: HeLa

C: Hep G2

7.5% SDS PAGE

Primary antibody diluted at 1: 1000



Immunohistochemical analysis of paraffin-embedded Cal27 Xenograft, using Lamin B2 antibody at 1: 100 dilution.

Background

The nuclear lamina consists of a two-dimensional matrix of proteins located next to the inner nuclear membrane. The lamin family of proteins make up the matrix and are highly conserved in evolution. During mitosis, the lamina matrix is reversibly disassembled as the lamin proteins are phosphorylated. Lamin proteins are thought to be involved in nuclear stability, chromatin structure and gene expression. Vertebrate lamins consist of two types, A and B. This gene encodes one of the two B type proteins, B2. This gene is in a head-to-tail orientation with the gene for the translocase of inner mitochondrial membrane 13 homolog gene. [provided by RefSeq]

Note: This product is for in vitro research use only and is not intended for use in humans or animals.