

MEDAG Antibody

Catalog No: #44000



Package Size: #44000-1 50ul #44000-2 100ul

Orders: order@signalwayantibody.comSupport: tech@signalwayantibody.com

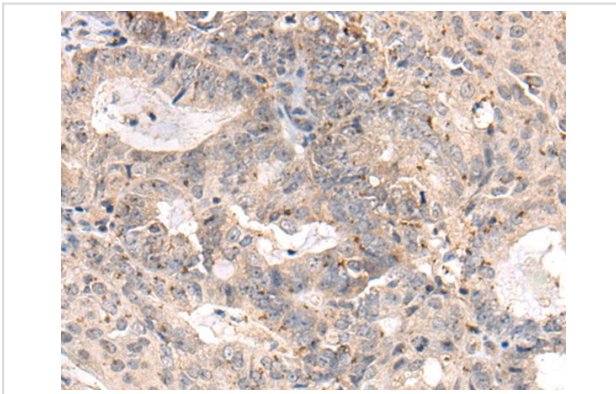
Description

Product Name	MEDAG Antibody
Host Species	Rabbit
Clonality	Polyclonal
Purification	Antigen affinity purification
Applications	IHC
Species Reactivity	Hu Ms
Specificity	The antibody detects endogenous levels of total MEDAG protein.
Immunogen Type	peptide
Immunogen Description	Synthetic peptide of human MEDAG
Target Name	MEDAG
Other Names	AWMS3; MEDA4; MEDA-4; hAWMS3; C13orf33
Accession No.	Swiss-Prot#: Q5VYS4NCBI Gene ID: 84935
Concentration	1.9mg/ml
Formulation	Rabbit IgG in pH7.4 PBS, 0.05% NaN ₃ , 40% Glycerol.
Storage	Store at -20°C

Application Details

Immunohistochemistry: 1: 100-300

Images



The image on the left is immunohistochemistry of paraffin-embedded Human ovarian cancer tissue using MEDAG Antibody at dilution 1/100, on the right is treated with synthetic peptide. (Original magnification: x200)

Background

Involved in processes that promote adipocyte differentiation, lipid accumulation, and glucose uptake in mature adipocytes.

Published Papers

el et., Evaluation of MEDAG gene expression in papillary thyroid microcarcinoma: associations with histological features, regional lymph node metastasis and prognosis. In Sci Rep on 2019 Apr 9 by Song Y, Fu LJ, et al.. PMID: 30967566, , (2019)

[PMID:30967566](#)

Note: This product is for in vitro research use only and is not intended for use in humans or animals.