

CD15 Monoclonal Antibody(Q89)

Catalog No: #44041



Package Size: #44041-1 50ul #44041-2 100ul

Orders: order@signalwayantibody.comSupport: tech@signalwayantibody.com

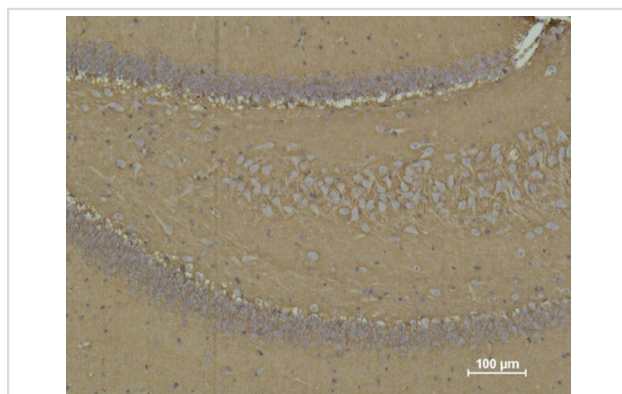
Description

Product Name	CD15 Monoclonal Antibody(Q89)
Host Species	Mouse
Clonality	Monoclonal
Clone No.	Q89
Isotype	IgG1
Applications	IHC
Species Reactivity	Hu
Specificity	The antibody detects endogenous CD15 protein.
Immunogen Type	Peptide
Immunogen Description	Synthetic Peptide
Target Name	CD15
Other Names	FUT4; ELFT; FCT3A; Alpha-(1,3)-fucosyltransferase; ELAM-1 ligand fucosyltransferase; Fucosyltransferase 4; Fucosyltransferase IV; Fuc-TIV; FucT-IV; Galactoside 3-L-fucosyltransferase
Concentration	1mg/ml
Formulation	Liquid in PBS containing 50% glycerol, 0.5% BSA and 0.02% sodium azide.
Storage	Store at -20°C/1 year

Application Details

Immunohistochemistry: 1:50-1:200

Images



Immunohistochemical analysis of paraffin-embedded Rat Brain Tissue using CD 15 Mouse mAb diluted at 1:500.

Note: This product is for in vitro research use only and is not intended for use in humans or animals.