

His-Tag Monoclonal Antibody(Mix)

Catalog No: #44053



Package Size: #44053-1 50ul #44053-2 100ul

Orders: order@signalwayantibody.comSupport: tech@signalwayantibody.com

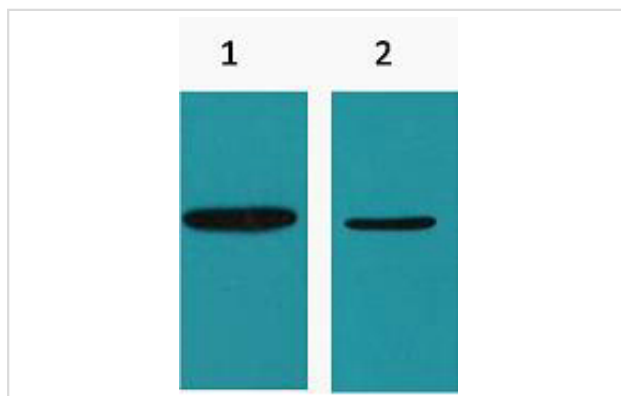
Description

Product Name	His-Tag Monoclonal Antibody(Mix)
Host Species	Mouse
Clonality	Monoclonal
Clone No.	Mix
Isotype	IgG1
Applications	WB
Specificity	The antibody detects C-terminal, internal, and N-terminal His-tag fusion proteins.
Immunogen Type	Peptide
Immunogen Description	Synthetic Peptide
Target Name	His-Tag
Concentration	1mg/ml
Formulation	Liquid in PBS containing 50% glycerol, 0.5% BSA and 0.02% sodium azide.
Storage	Store at -20°C/1 year

Application Details

Western blotting: 1:500-1:2000

Images



Western blot analysis of His-Tag recombinant protein, diluted at 1:10000

- 1) His-MBP recombinant protein
- 2) His-Tag transfected 293T

Note: This product is for in vitro research use only and is not intended for use in humans or animals.