

mStrawberry Monoclonal Antibody(Mix)

Catalog No: #44061



Package Size: #44061-1 50ul #44061-2 100ul

Orders: order@signalwayantibody.comSupport: tech@signalwayantibody.com

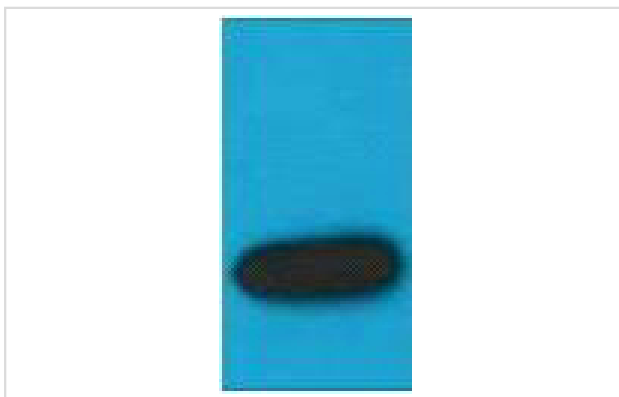
Description

Product Name	mStrawberry Monoclonal Antibody(Mix)
Host Species	Mouse
Clonality	Monoclonal
Clone No.	Mix
Isotype	IgG1
Applications	WB
Specificity	The antibody detects mStrawberry & mStrawberry Tag protein. It May had cross reactivity with mRFP protein.
Immunogen Type	Peptide
Immunogen Description	Synthetic Peptide
Target Name	mStrawberry
Concentration	1mg/ml
Formulation	Liquid in PBS containing 50% glycerol, 0.5% BSA and 0.02% sodium azide.
Storage	Store at -20°C/1 year

Application Details

Western blotting: 1:500-1:2000

Images



Western blot analysis of mStrawberry recombinant protein, diluted at 1:5000.

Note: This product is for in vitro research use only and is not intended for use in humans or animals.