

# β-tubulin Monoclonal antibody(5G3)

Catalog No: #44069



Package Size: #44069-1 50ul #44069-2 100ul

Orders: [order@signalwayantibody.com](mailto:order@signalwayantibody.com)

Support: [tech@signalwayantibody.com](mailto:tech@signalwayantibody.com)

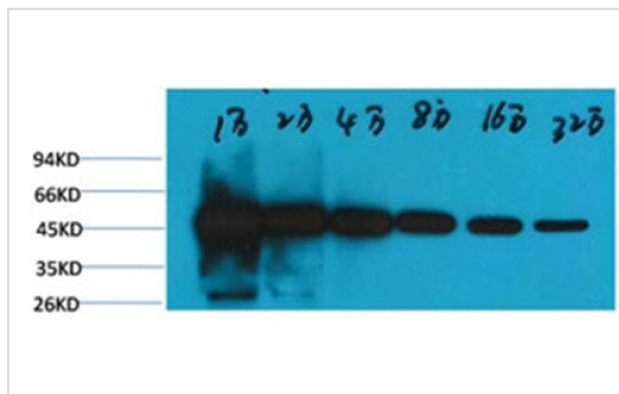
## Description

Product Name	β-tubulin Monoclonal antibody(5G3)
Host Species	Mouse
Clonality	Monoclonal
Clone No.	5G3
Isotype	IgG1
Applications	WB IHC
Species Reactivity	Hu Rt Ms Mk D Chk Hm Rb Shp Insect Yeast
Specificity	The β-tubulin antibody can detect endogenous β-tubulin protein.
Immunogen Type	Recombinant protein
Immunogen Description	Recombinant Protein
Target Name	β-tubulin
Other Names	β-tubulin(HRP Conjugated)
Calculated MW	55kd
Concentration	1mg/ml
Formulation	Liquid in PBS containing 50% glycerol, 0.5% BSA and 0.02% sodium azide.
Storage	Store at -20°C/1 year

## Application Details

Western blotting: 1:1000-1:3000

## Images



Western blot analysis of HeLa, with β-tubulin-HRP Conjugated diluted at 1:10,000, 20,000, 40,000, 80,000, 160,000, 320,000.

Note: This product is for in vitro research use only and is not intended for use in humans or animals.