

## c-Fos Monoclonal antibody(6A3)

Catalog No: #44071

Package Size: #44071-1 50ul #44071-2 100ul

Orders: [order@signalwayantibody.com](mailto:order@signalwayantibody.com)Support: [tech@signalwayantibody.com](mailto:tech@signalwayantibody.com)

## Description

Product Name	c-Fos Monoclonal antibody(6A3)
Host Species	Mouse
Clonality	Monoclonal
Clone No.	6A3
Isotype	IgG1
Applications	WB IHC IF
Species Reactivity	Hu Rt Ms
Specificity	The antibody detects endogenous c-fos protein.
Immunogen Type	Recombinant Protein
Immunogen Description	Recombinant Protein
Target Name	c-Fos
Other Names	c-Fos
Calculated MW	62kd
Concentration	1mg/ml
Formulation	Liquid in PBS containing 50% glycerol, 0.5% BSA and 0.02% sodium azide.
Storage	Store at -20°C/1 year

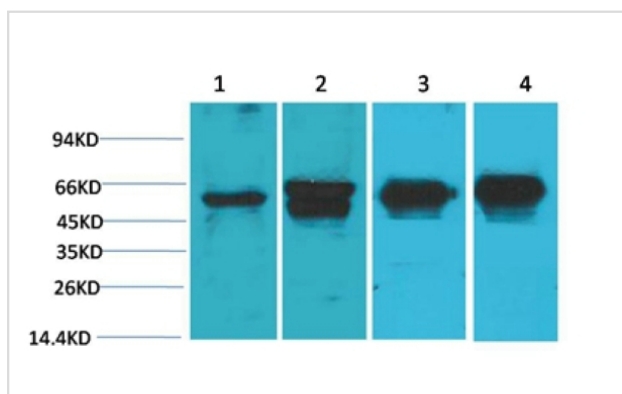
## Application Details

Western blotting: 1:1000-1:3000

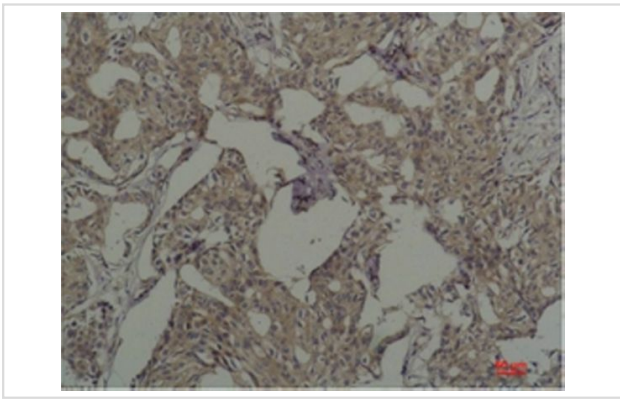
Immunohistochemistry: 1:50-1:200

Immunofluorescence 1:50-200

## Images



Western blot analysis of 1) HeLa, 2) 293T, 3) Mouse Brain Tissue, 4) Rat Brain Tissue with c-Fos Mouse mAb diluted at 1:2,000.



Immunohistochemical analysis of paraffin-embedded Human Breast Carcinoma using c-FosMouse mAb diluted at 1:200.

---

Note: This product is for in vitro research use only and is not intended for use in humans or animals.