

Nano-Tag9 Monoclonal Antibody(4C1)

Catalog No: #44080



Package Size: #44080-1 50ul #44080-2 100ul

Orders: order@signalwayantibody.comSupport: tech@signalwayantibody.com

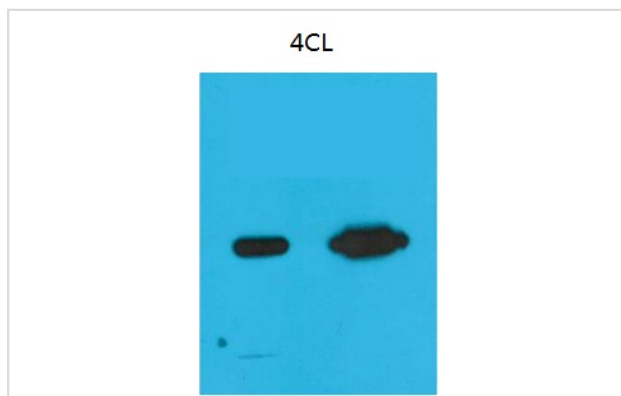
Description

Product Name	Nano-Tag9 Monoclonal Antibody(4C1)
Host Species	Mouse
Clonality	Monoclonal
Clone No.	4C1
Isotype	IgG1
Applications	WB
Specificity	The antibody detects the protein which have Nano-Tag9
Immunogen Type	Peptide
Immunogen Description	Synthetic Peptide
Target Name	Nano-Tag9
Concentration	1mg/ml
Formulation	Liquid in PBS containing 50% glycerol, 0.5% BSA and 0.02% sodium azide.
Storage	Store at -20°C/1 year

Application Details

Western blotting: 1:2000-1:5000

Images



Western blot analysis of Recombinant Nano-Tag9 Protein with Nano-Tag9 Mouse mAb diluted at
1)1:10,000
2)1:5,000

Note: This product is for in vitro research use only and is not intended for use in humans or animals.