

## Nano-Tag9 Monoclonal Antibody(4B7)

Catalog No: #44081

Package Size: #44081-1 50ul #44081-2 100ul

Orders: [order@signalwayantibody.com](mailto:order@signalwayantibody.com)Support: [tech@signalwayantibody.com](mailto:tech@signalwayantibody.com)

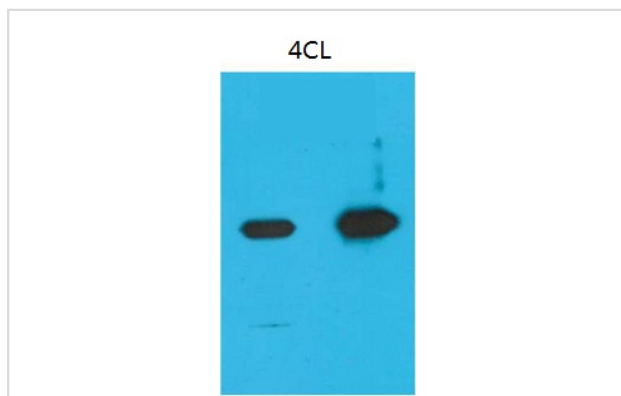
## Description

Product Name	Nano-Tag9 Monoclonal Antibody(4B7)
Host Species	Mouse
Clonality	Monoclonal
Clone No.	4B7
Isotype	IgG1
Applications	WB
Specificity	The antibody detects the protein which have Nano-Tag9
Immunogen Type	Peptide
Immunogen Description	Synthetic Peptide
Target Name	Nano-Tag9
Concentration	1mg/ml
Formulation	Liquid in PBS containing 50% glycerol, 0.5% BSA and 0.02% sodium azide.
Storage	Store at -20°C/1 year

## Application Details

Western blotting: 1:2000-1:5000

## Images



Western blot analysis of Recombinant Nano-Tag9 Protein with Nano-Tag9 Mouse mAb diluted at  
1)1:10,000  
2)1:5,000

Note: This product is for in vitro research use only and is not intended for use in humans or animals.