

## Cyclophilin B Monoclonal Antibody(2B10)

Catalog No: #44094

Package Size: #44094-1 50ul #44094-2 100ul

Orders: [order@signalwayantibody.com](mailto:order@signalwayantibody.com)Support: [tech@signalwayantibody.com](mailto:tech@signalwayantibody.com)

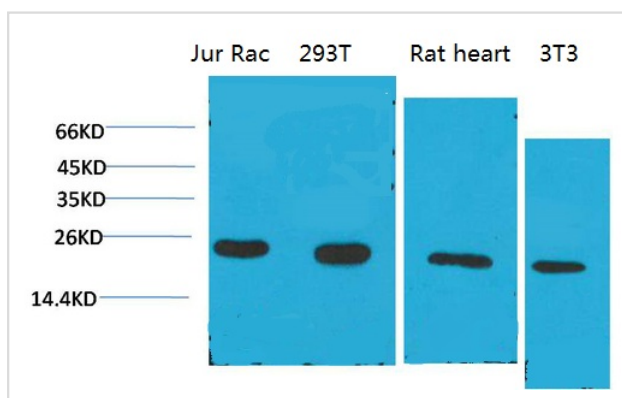
## Description

|                       |  |
|-----------------------|--|
| Product Name          | Cyclophilin B Monoclonal Antibody(2B10)  |
| Host Species          | Mouse  |
| Clonality             | Monoclonal   |
| Clone No.             | 2B10   |
| Isotype               | IgG1   |
| Applications          | WB   |
| Species Reactivity    | Hu Rt Ms   |
| Specificity           | Cyclophilin B Mouse Monoclonal Antibody(2B10) detects endogenous levels of Cyclophilin B |
| Immunogen Type        | Peptide  |
| Immunogen Description | Synthetic Peptide  |
| Target Name           | Cyclophilin B  |
| Calculated MW         | 21kd   |
| Concentration         | 1mg/ml   |
| Formulation           | Liquid in PBS containing 50% glycerol, 0.5% BSA and 0.02% sodium azide.                  |
| Storage               | Store at -20°C/1 year  |

## Application Details

Western blotting: 1:1000-1:2000

## Images



Western blot analysis of 1) Jurkat, 2)293T, 3)Rat Liver Tissue, 4)3T3 with Cyclophilin B Mouse mAb diluted at 1:2,000.

Note: This product is for in vitro research use only and is not intended for use in humans or animals.