

# CaMKII $\beta/\gamma/\delta$ (Phospho Thr287) Monoclonal Antibody(4H2)

Catalog No: #12830

Package Size: #12830-1 50ul #12830-2 100ul

Orders: [order@signalwayantibody.com](mailto:order@signalwayantibody.com)Support: [tech@signalwayantibody.com](mailto:tech@signalwayantibody.com)

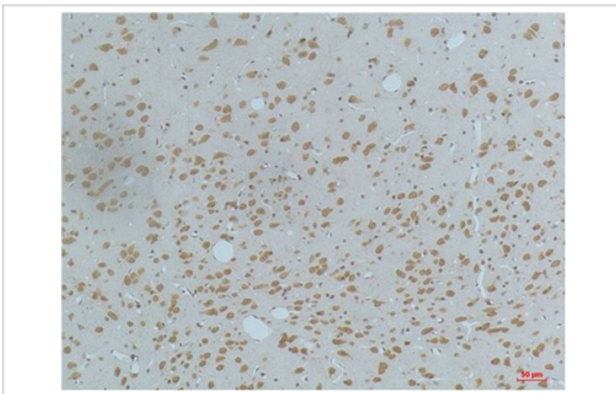
## Description

Product Name	CaMKII $\beta/\gamma/\delta$ (Phospho Thr287) Monoclonal Antibody(4H2)
Host Species	Mouse
Clonality	Monoclonal
Clone No.	4H2
Isotype	IgG1
Applications	IHC
Species Reactivity	Hu Rt Ms
Specificity	CaMKII $\beta/\gamma/\delta$ (Phospho Thr287) Mouse Monoclonal Antibody(4H2) detects endogenous levels of CaMKII $\beta/\gamma/\delta$ (Phospho Thr287)
Immunogen Type	Peptide
Immunogen Description	Synthetic Peptide
Target Name	CaMKII $\beta/\gamma/\delta$
Modification	Phospho
Calculated MW	50kd
Concentration	1mg/ml
Formulation	Liquid in PBS containing 50% glycerol, 0.5% BSA and 0.02% sodium azide.
Storage	Store at -20°C/1 year

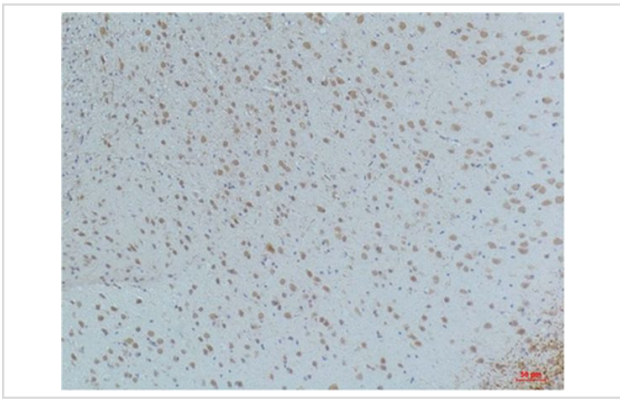
## Application Details

Immunohistochemistry: 1:100-1:200

## Images



Immunohistochemical analysis of paraffin-embedded Rat Brain Tissue using CaMKII $\beta/\gamma/\delta$  (Phospho Thr287) (mAb diluted at 1:200).



Immunohistochemical analysis of paraffin-embedded Mouse Brain Tissue using CaMKII $\beta$ /  $\gamma$  / $\delta$  (Phospho Thr287) Mouse mAb diluted at 1:200.

---

Note: This product is for in vitro research use only and is not intended for use in humans or animals.