

P44/42 MAPK (ERK1/2) Monoclonal Antibody(6C10)

Catalog No: #44100



Package Size: #44100-1 50ul #44100-2 100ul

Orders: order@signalwayantibody.com

Support: tech@signalwayantibody.com

Description

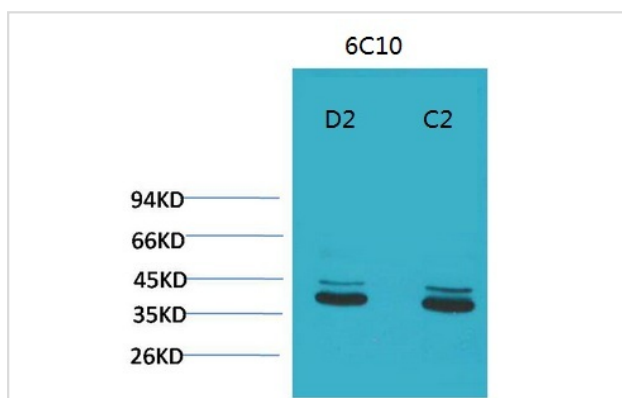
Product Name	P44/42 MAPK (ERK1/2) Monoclonal Antibody(6C10)
Host Species	Mouse
Clonality	Monoclonal
Clone No.	6C10
Isotype	IgG1
Applications	WB IHC
Species Reactivity	Hu Rt Ms
Specificity	P44/42 MAPK(ERK1/2) Mouse Monoclonal Antibody(6C10) detects endogenous levels of P44/42 MAPK(ERK1/2)
Immunogen Type	Peptide
Immunogen Description	Synthetic Peptide
Target Name	P44/42 MAPK (ERK1/2)
Calculated MW	44,42kd
Concentration	1mg/ml
Formulation	Liquid in PBS containing 50% glycerol, 0.5% BSA and 0.02% sodium azide.
Storage	Store at -20°C/1 year

Application Details

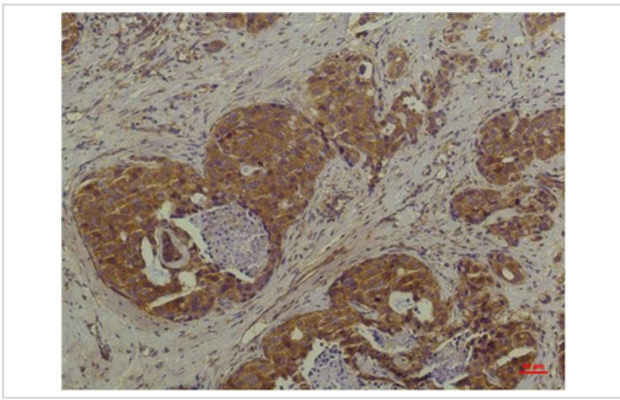
Western blotting: 1:1000-1:2000

Immunohistochemistry: 1:50-1:100

Images



Western blot analysis of 1) Mouse Brain Tissue, 2) Rat Brain Tissue with P44/42 MAPK(ERK1/2) Mouse mAb diluted at 1:2,000.



Immunohistochemical analysis of paraffin-embedded Human Breast Carcinoma using P44/42 MAPK (ERK1/2) Mouse mAb diluted at 1:200.

Note: This product is for in vitro research use only and is not intended for use in humans or animals.