

phospho-MLKL (S358) Mouse Monoclonal Antibody(6B4)

Catalog No: #12837

Orders: order@signalwayantibody.comSupport: tech@signalwayantibody.com

Package Size: #12837-1 50ul #12837-2 100ul

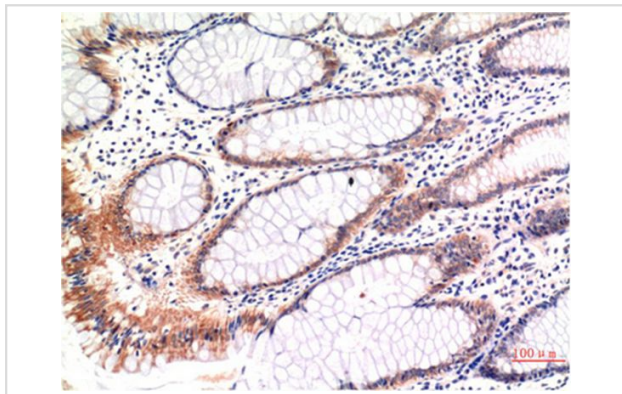
Description

Product Name	phospho-MLKL (S358) Mouse Monoclonal Antibody(6B4)
Host Species	Mouse
Clonality	Monoclonal
Clone No.	6B4
Isotype	IgG1
Applications	IHC
Species Reactivity	Hu
Specificity	phospho-MLKL (S358) Mouse Monoclonal Antibody(6B4) detects endogenous levels of MLKL
Immunogen Type	Peptide
Immunogen Description	Synthetic Peptide
Target Name	MLKL
Modification	Phospho
Other Names	MLKL
Calculated MW	54kd
Concentration	1mg/ml
Formulation	Liquid in PBS containing 50% glycerol, 0.5% BSA and 0.02% sodium azide.
Storage	Store at -20°C/1 year

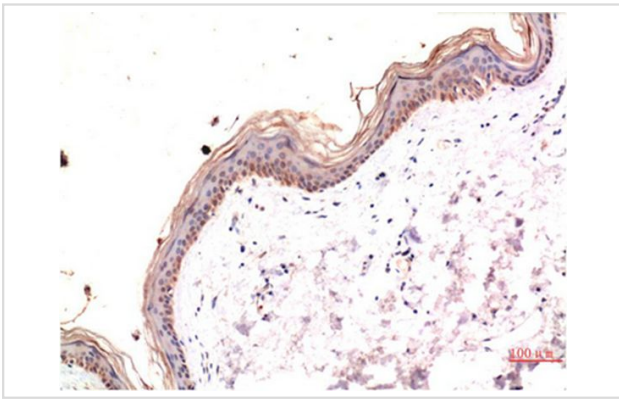
Application Details

Immunohistochemistry: 1:100-1:200

Images



Immunohistochemical analysis of paraffin-embedded Human Colon Carcinoma Tissue using Phospho-MLKL S358 Mouse mAb diluted at 1:200.



Immunohistochemical analysis of paraffin-embedded Human Skin Tissue using Phospho-MLKL S358 Mouse mAb diluted at 1:200.

Published Papers

el at., Necroptosis activation in Alzheimer's disease. In Nat Neurosci on 2017 Sep by Antonella Caccamo, Caterina Branca, et al.. PMID:28758999, , (2022)

[PMID:28758999](#)

el at., Necroptosis activation in Alzheimer's disease. In Nat Neurosci on 2017 Sep by Antonella Caccamo, Caterina Branca, et al., , (2017)

[PMID:28758999](#)

Note: This product is for in vitro research use only and is not intended for use in humans or animals.