

## VE-Cadherin Mouse Monoclonal Antibody(8E5)

Catalog No: #44200

Package Size: #44200-1 50ul #44200-2 100ul

Orders: [order@signalwayantibody.com](mailto:order@signalwayantibody.com)Support: [tech@signalwayantibody.com](mailto:tech@signalwayantibody.com)

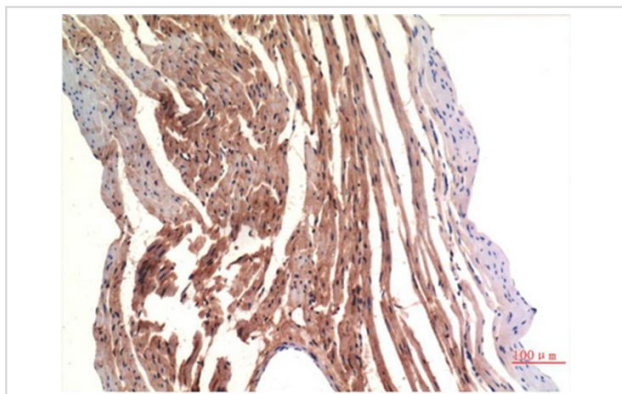
## Description

Product Name	VE-Cadherin Mouse Monoclonal Antibody(8E5)
Host Species	Mouse
Clonality	Monoclonal
Clone No.	8.00E+05
Isotype	IgG1
Applications	IHC
Species Reactivity	Hu Rt Ms
Specificity	VE-Cadherin Mouse Monoclonal Antibody(8E5) detects endogenous levels of CDH5
Immunogen Type	Peptide
Immunogen Description	Synthetic Peptide
Target Name	VE-Cadherin
Other Names	CDH5
Calculated MW	88kd
Concentration	1mg/ml
Formulation	Liquid in PBS containing 50% glycerol, 0.5% BSA and 0.02% sodium azide.
Storage	Store at -20°C/1 year

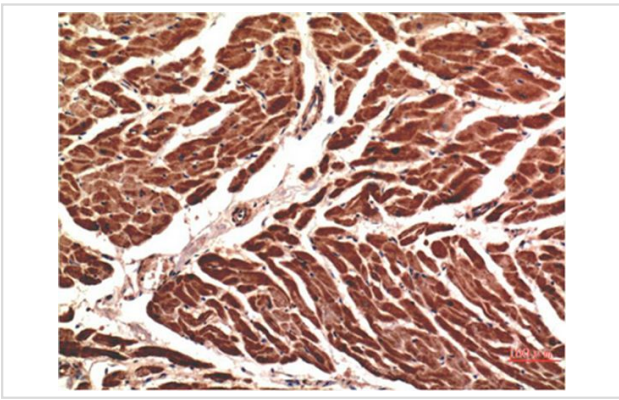
## Application Details

Immunohistochemistry: 1:100-1:200

## Images



Immunohistochemical analysis of paraffin-embedded Rat Heart Tissue using VE-Cadherin Mouse mAb diluted at 1:200.



Immunohistochemical analysis of paraffin-embedded Human Heart Tissue using VE-Cadherin Mouse mAb diluted at 1:200.

---

Note: This product is for in vitro research use only and is not intended for use in humans or animals.