

## Collagen I Mouse Monoclonal Antibody(2D10)

Catalog No: #44268

Package Size: #44268-1 50ul #44268-2 100ul

Orders: [order@signalwayantibody.com](mailto:order@signalwayantibody.com)Support: [tech@signalwayantibody.com](mailto:tech@signalwayantibody.com)

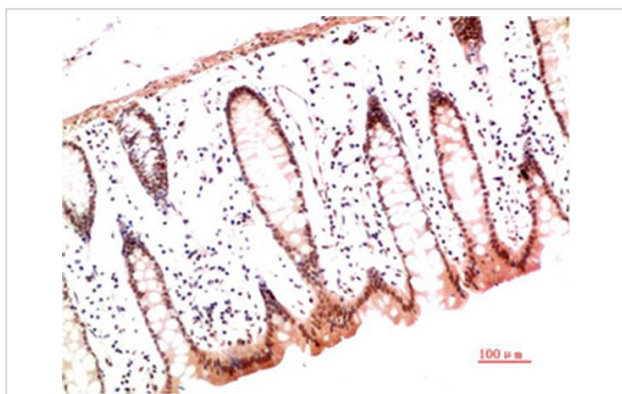
## Description

Product Name	Collagen I Mouse Monoclonal Antibody(2D10)
Host Species	Mouse
Clonality	Monoclonal
Clone No.	2D10
Isotype	IgG1
Applications	IHC
Species Reactivity	Hu Ms Rt
Specificity	The antibody detects endogenous Collagen I protein
Immunogen Type	Peptide
Immunogen Description	Synthetic Peptide of Collagen I
Target Name	Collagen I
Other Names	Collagen alpha-1(I) chain (Alpha-1 type I collagen)
Calculated MW	139kd
Concentration	1mg/ml
Formulation	Liquid in PBS containing 50% glycerol, 0.5% BSA and 0.02% sodium azide.
Storage	Store at -20°C/1 year

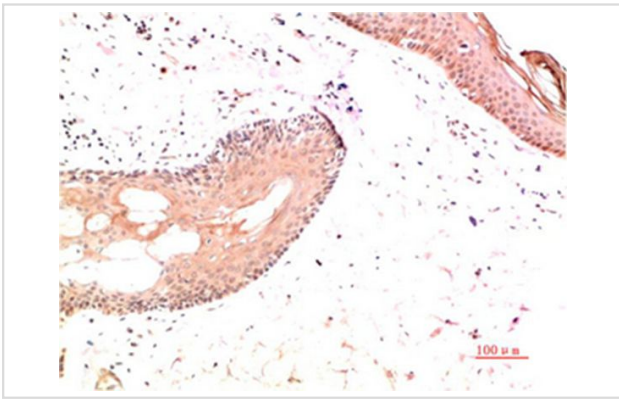
## Application Details

Immunohistochemistry: 1:50-1:200

## Images



Immunohistochemical analysis of paraffin-embedded Human Colon Carcinoma Tissue using Collagen I Mouse mAb diluted at 1:200.



Immunohistochemical analysis of paraffin-embedded Human Skin Carcinoma Tissue using Collagen I Mouse mAb diluted at 1:200.

---

Note: This product is for in vitro research use only and is not intended for use in humans or animals.