

## CTIP (Phospho-Ser327) Antibody

Catalog No: #12402



Package Size: #12402-1 50ul #12402-2 100ul

Orders: order@signalwayantibody.com

Support: tech@signalwayantibody.com

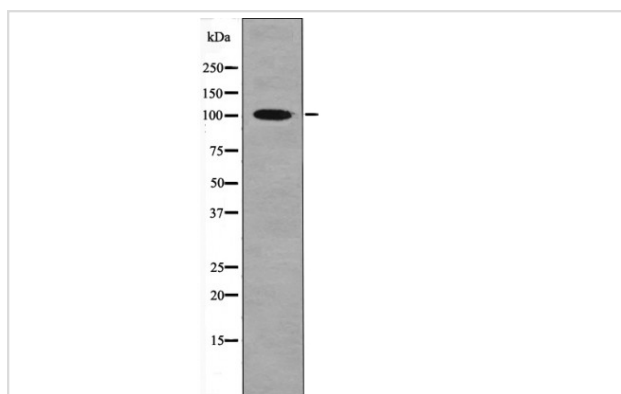
## Description

Product Name	CTIP (Phospho-Ser327) Antibody
Host Species	Rabbit
Clonality	Polyclonal
Purification	Antibodies were produced by immunizing rabbits with synthetic phosphopeptide and KLH conjugates. Antibodies were purified by affinity-chromatography using epitope-specific phosphopeptide. Non-phospho specific antibodies were removed by chromatography using non-phosphopeptide.
Applications	WB
Species Reactivity	Hu Ms
Specificity	CTIP (Phospho-Ser327) Antibody detects endogenous levels of CTIP only when phosphorylated at Ser327
Immunogen Type	Peptide
Immunogen Description	A synthesized peptide derived from human CTIP (Phospho-Ser327)
Target Name	CTIP
Modification	Phospho
Other Names	RBBP8, CTIP, DNA endonuclease RBBP8, RIM, SAE2, COM1, CtBP-interacting protein, JWDS, RBBP-8, SCKL2, Seckel syndrome 2
Accession No.	Swiss-Prot#: Q99708NCBI Gene ID: 5932
Target Species	human
Calculated MW	102kd
Concentration	1.0mg/ml
Formulation	Rabbit IgG in phosphate buffered saline (without Mg <sup>2+</sup> and Ca <sup>2+</sup> ), pH 7.4, 150mM NaCl, 0.02% sodium azide and 50% glycerol.
Storage	Store at -20°C

## Application Details

Western blotting: 1:1000

## Images



Western blot analysis CTIP (Phospho-Ser327) using H<sub>2</sub>O<sub>2</sub> treated 293 whole cell lysates

---

Note: This product is for in vitro research use only and is not intended for use in humans or animals.