

## NFAT1 (Phospho-Ser326) Antibody

Catalog No: #12405

Orders: [order@signalwayantibody.com](mailto:order@signalwayantibody.com)Support: [tech@signalwayantibody.com](mailto:tech@signalwayantibody.com)

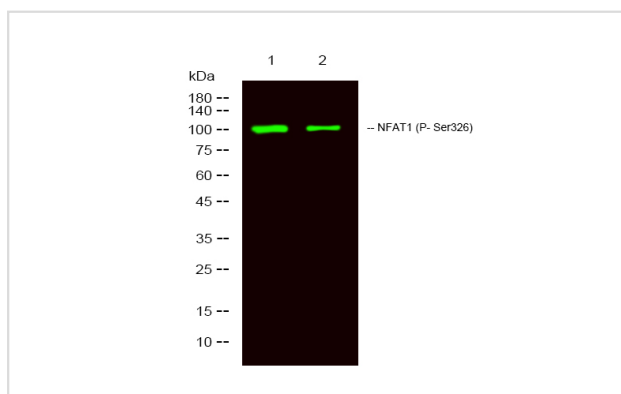
## Description

Product Name	NFAT1 (Phospho-Ser326) Antibody
Host Species	Rabbit
Clonality	Polyclonal
Purification	Antibodies were produced by immunizing rabbits with synthetic phosphopeptide and KLH conjugates. Antibodies were purified by affinity-chromatography using epitope-specific phosphopeptide. Non-phospho specific antibodies were removed by chromatography using non-phosphopeptide.
Applications	WB
Species Reactivity	Hu Ms
Specificity	NFAT1 (Phospho-Ser326) Antibody detects endogenous levels of NFAT1 only when phosphorylated at Ser326
Immunogen Type	Peptide
Immunogen Description	A synthesized peptide derived from human NFAT1 (Phospho-Ser326)
Target Name	NFAT1
Modification	Phospho
Other Names	NFATC2, NF-ATc2, NF-ATp, NFAT1, NFAT pre-existing subunit, NFATP
Accession No.	Swiss-Prot#: Q13469NCBI Gene ID: 4773
Target Species	human
Calculated MW	98kd
Concentration	1.0mg/ml
Formulation	Rabbit IgG in phosphate buffered saline (without Mg <sup>2+</sup> and Ca <sup>2+</sup> ), pH 7.4, 150mM NaCl, 0.02% sodium azide and 50% glycerol.
Storage	Store at -20°C

## Application Details

Western blotting: 1:1000

## Images



Western Blot analysis of lysates of 1. MCF-7 treated with LPS and 2. MCF-7, using primary antibody at 1:1000 dilution.

## Published Papers

---

el et al., Regulator of Calcineurin 1 Gene Isoform 4, Down-regulated in Hepatocellular Carcinoma, Prevents Proliferation, Migration, and Invasive Activity of Cancer Cells and Metastasis of Orthotopic Tumors by Inhibiting Nuclear Translocation of NFAT1. In Gastroenterology on 2017 Sep by Haojie Jin, Cun Wang, et al., (2017)

[PMID:28583823](#)

---

Note: This product is for in vitro research use only and is not intended for use in humans or animals.