

NF- κ B p105 (Phospho-Ser923) Antibody

Catalog No: #12408



Package Size: #12408-1 50ul #12408-2 100ul

Orders: order@signalwayantibody.comSupport: tech@signalwayantibody.com

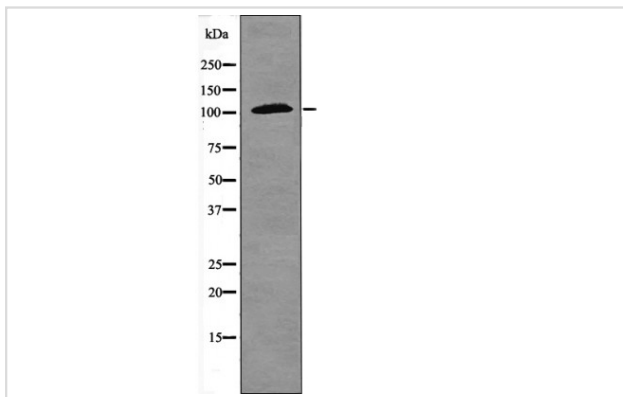
Description

Product Name	NF- κ B p105 (Phospho-Ser923) Antibody
Host Species	Rabbit
Clonality	Polyclonal
Purification	Antibodies were produced by immunizing rabbits with synthetic phosphopeptide and KLH conjugates. Antibodies were purified by affinity-chromatography using epitope-specific phosphopeptide. Non-phospho specific antibodies were removed by chromatography using non-phosphopeptide.
Applications	WB
Species Reactivity	Hu Ms Rt
Specificity	NF- κ B p105 (Phospho-Ser923) Antibody detects endogenous levels of NF- κ B p105 only when phosphorylated at Ser923
Immunogen Type	Peptide
Immunogen Description	A synthesized peptide derived from human NF- κ B p105 (Phospho-Ser923)
Target Name	NF- κ B p105
Modification	Phospho
Other Names	NFKB1, Ebp- 1, EBP-1, NF-KappaB p50, NFkappaB, NFKB-p50, KBF1, NF-kappa-B, NF-kappaB, NF-kB1, NFKB-p105, p105, p50, DNA binding factor KBF1, DNA-binding factor KBF1, NF-kappabeta
Accession No.	Swiss-Prot#: P19838NCBI Gene ID: 4790
Target Species	human
Calculated MW	110kd
Concentration	1.0mg/ml
Formulation	Rabbit IgG in phosphate buffered saline (without Mg ²⁺ and Ca ²⁺), pH 7.4, 150mM NaCl, 0.02% sodium azide and 50% glycerol.
Storage	Store at -20°C

Application Details

Western blotting: 1:1000

Images



Western blot analysis NF- κ B p105 (Phospho-Ser923) using PC12 whole cell lysates

Note: This product is for in vitro research use only and is not intended for use in humans or animals.