

Doublecortin (Phospho-Ser378) Antibody

Catalog No: #12415

Package Size: #12415-1 50ul #12415-2 100ul

Orders: order@signalwayantibody.comSupport: tech@signalwayantibody.com

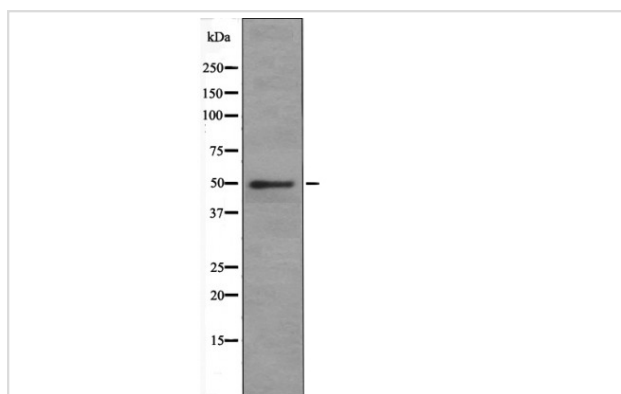
Description

Product Name	Doublecortin (Phospho-Ser378) Antibody
Host Species	Rabbit
Clonality	Polyclonal
Purification	Antibodies were produced by immunizing rabbits with synthetic phosphopeptide and KLH conjugates. Antibodies were purified by affinity-chromatography using epitope-specific phosphopeptide. Non-phospho specific antibodies were removed by chromatography using non-phosphopeptide.
Applications	WB
Species Reactivity	Hu Ms Rt
Specificity	Doublecortin (Phospho-Ser378) Antibody detects endogenous levels of Doublecortin only when phosphorylated at Ser378
Immunogen Type	Peptide
Immunogen Description	A synthesized peptide derived from human Doublecortin (Phospho-Ser378)
Target Name	Doublecortin
Modification	Phospho
Other Names	DCX, DBCN, Doublecortin, Dublin, Doublecortex, Lis-X, SCLH, LISX, XLIS, Lissencephalin-X
Accession No.	Swiss-Prot#: O43602NCBI Gene ID: 1641
Target Species	human
Calculated MW	49kd
Concentration	1.0mg/ml
Formulation	Rabbit IgG in phosphate buffered saline (without Mg ²⁺ and Ca ²⁺), pH 7.4, 150mM NaCl, 0.02% sodium azide and 50% glycerol.
Storage	Store at -20°C

Application Details

Western blotting: 1:1000

Images



Western blot analysis Doublecortin (Phospho-Ser378) using Insulin treated 293 whole cell lysates

Note: This product is for in vitro research use only and is not intended for use in humans or animals.