

PKC  $\beta$  (Phospho-Ser660) Antibody

Catalog No: #12418



Package Size: #12418-1 50ul #12418-2 100ul

Orders: [order@signalwayantibody.com](mailto:order@signalwayantibody.com)Support: [tech@signalwayantibody.com](mailto:tech@signalwayantibody.com)

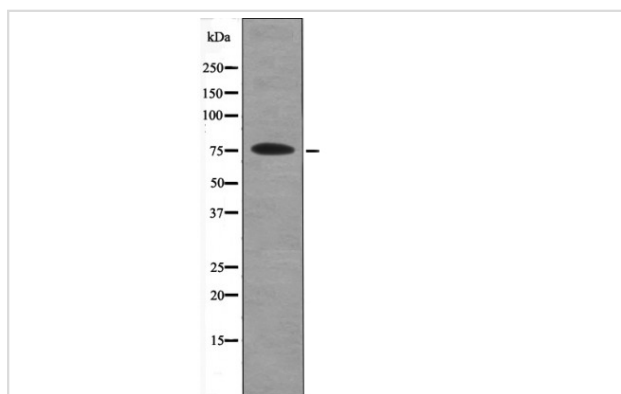
## Description

Product Name	PKC $\beta$ (Phospho-Ser660) Antibody
Host Species	Rabbit
Clonality	Polyclonal
Purification	Antibodies were produced by immunizing rabbits with synthetic phosphopeptide and KLH conjugates. Antibodies were purified by affinity-chromatography using epitope-specific phosphopeptide. Non-phospho specific antibodies were removed by chromatography using non-phosphopeptide.
Applications	WB
Species Reactivity	Ms
Specificity	PKC $\beta$ (Phospho-Ser660) Antibody detects endogenous levels of PKC $\beta$ only when phosphorylated at Ser660
Immunogen Type	Peptide
Immunogen Description	A synthesized peptide derived from human PKC $\beta$ (Phospho-Ser660)
Target Name	PKC $\beta$
Modification	Phospho
Other Names	PKC $\beta$ (Phospho-Ser660) Antibody
Accession No.	Swiss-Prot#: P68404(P05771)NCBI Gene ID: 18751
Target Species	human
Calculated MW	76kd
Concentration	1.0mg/ml
Formulation	Rabbit IgG in phosphate buffered saline (without Mg <sup>2+</sup> and Ca <sup>2+</sup> ), pH 7.4, 150mM NaCl, 0.02% sodium azide and 50% glycerol.
Storage	Store at -20°C

## Application Details

Western blotting: 1:1000

## Images

Western blot analysis PKC  $\beta$  (Phospho-Ser660) using HepG2 whole cell lysates

---

Note: This product is for in vitro research use only and is not intended for use in humans or animals.