

B-Myb (Phospho-Thr494/497) Antibody

Catalog No: #12420



Package Size: #12420-1 50ul #12420-2 100ul

Orders: order@signalwayantibody.comSupport: tech@signalwayantibody.com

Description

Product Name	B-Myb (Phospho-Thr494/497) Antibody
Host Species	Rabbit
Clonality	Polyclonal
Purification	Antibodies were produced by immunizing rabbits with synthetic phosphopeptide and KLH conjugates. Antibodies were purified by affinity-chromatography using epitope-specific phosphopeptide. Non-phospho specific antibodies were removed by chromatography using non-phosphopeptide.
Applications	WB
Species Reactivity	Hu Ms Rt
Specificity	B-Myb (Phospho-Thr494/497) Antibody detects endogenous levels of B-Myb only when phosphorylated at Thr494/497
Immunogen Type	Peptide
Immunogen Description	A synthesized peptide derived from human B-Myb (Phospho-Thr494/497)
Target Name	B-Myb
Modification	Phospho
Other Names	MYBL2, B-MYB, Myb-like protein 2, Myb-related protein B, BMYB
Accession No.	Swiss-Prot#: P10244NCBI Gene ID: 4605
Target Species	human
Calculated MW	79kd
Concentration	1.0mg/ml
Formulation	Rabbit IgG in phosphate buffered saline (without Mg ²⁺ and Ca ²⁺), pH 7.4, 150mM NaCl, 0.02% sodium azide and 50% glycerol.
Storage	Store at -20°C

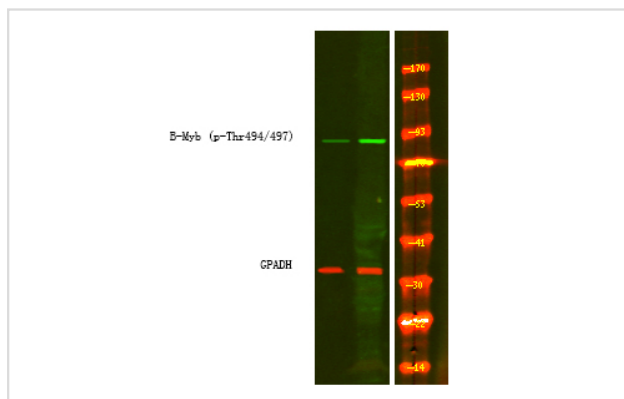
Application Details

Western blotting: 1:1000-3000

IHC dilution: 1:50-1:200

ELISA(peptide) dilution: 1:20000-1:40000

Images



Western Blot analysis of lysates of HeLa cell (Left) and HeLa cell treated with 100ng/mL LPS for 30min (Right), using primary antibody at 1:1000 dilution.

Note: This product is for in vitro research use only and is not intended for use in humans or animals.