

## Ret (Phospho-Tyr1096) Antibody

Catalog No: #12434



Package Size: #12434-1 50ul #12434-2 100ul

Orders: [order@signalwayantibody.com](mailto:order@signalwayantibody.com)Support: [tech@signalwayantibody.com](mailto:tech@signalwayantibody.com)

## Description

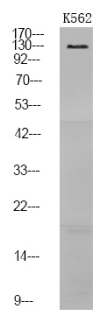
Product Name	Ret (Phospho-Tyr1096) Antibody
Host Species	Rabbit
Clonality	Polyclonal
Purification	Antibodies were produced by immunizing rabbits with synthetic phosphopeptide and KLH conjugates. Antibodies were purified by affinity-chromatography using epitope-specific phosphopeptide. Non-phospho specific antibodies were removed by chromatography using non-phosphopeptide.
Applications	WB
Species Reactivity	Hu Ms Rt
Specificity	Ret (Phospho-Tyr1096) Antibody detects endogenous levels of Ret only when phosphorylated at Tyr1096
Immunogen Type	Peptide
Immunogen Description	A synthesized peptide derived from human Ret (Phospho-Tyr1096)
Target Name	Ret
Modification	Phospho
Other Names	RET, Cadherin family member 12, CDHF12, C-ret, Hirschsprung disease 1, HSCR1, Hydroxyaryl-protein kinase, Oncogene ret, Proto-oncogene c-Ret, RET-ELE1, RET51, Ret proto-oncogene, RET transforming sequence, RET43, Men2-ret, MEN2B, MTC1, Receptor tyros ...
Accession No.	Swiss-Prot#: P07949NCBI Gene ID: 5979
Target Species	human
Calculated MW	175kd
Concentration	1.0mg/ml
Formulation	Rabbit IgG in phosphate buffered saline (without Mg <sup>2+</sup> and Ca <sup>2+</sup> ), pH 7.4, 150mM NaCl, 0.02% sodium azide and 50% glycerol.
Storage	Store at -20°C

## Application Details

Western blotting: 1:1000

## Images

Western Blot analysis of lysates of K562 cell, using primary antibody at 1:1000 dilution.



---

Note: This product is for in vitro research use only and is not intended for use in humans or animals.