

Gz- $\alpha$  (Phospho-Ser16) Antibody

Catalog No: #12439

Package Size: #12439-1 50ul #12439-2 100ul

Orders: order@signalwayantibody.com

Support: tech@signalwayantibody.com

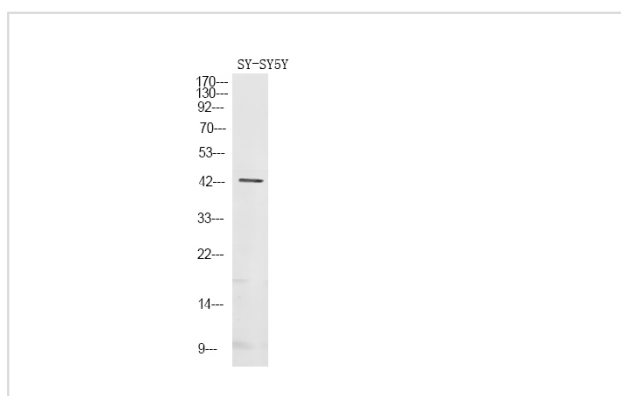
## Description

Product Name	Gz- $\alpha$ (Phospho-Ser16) Antibody
Host Species	Rabbit
Clonality	Polyclonal
Purification	Antibodies were produced by immunizing rabbits with synthetic phosphopeptide and KLH conjugates. Antibodies were purified by affinity-chromatography using epitope-specific phosphopeptide. Non-phospho specific antibodies were removed by chromatography using non-phosphopeptide.
Applications	WB
Species Reactivity	Hu Ms Rt
Specificity	Gz- $\alpha$ (Phospho-Ser16) Antibody detects endogenous levels of Gz- $\alpha$ only when phosphorylated at Ser16
Immunogen Type	Peptide
Immunogen Description	A synthesized peptide derived from human Gz- $\alpha$ (Phospho-Ser16)
Target Name	Gz- $\alpha$
Modification	Phospho
Other Names	GNAZ, G(x) alpha chain, Transducin alpha, Gz-alpha
Accession No.	Swiss-Prot#: P19086NCBI Gene ID: 2781
Target Species	human
Calculated MW	41kd
Concentration	1.0mg/ml
Formulation	Rabbit IgG in phosphate buffered saline (without Mg <sup>2+</sup> and Ca <sup>2+</sup> ), pH 7.4, 150mM NaCl, 0.02% sodium azide and 50% glycerol.
Storage	Store at -20°C

## Application Details

Western blotting: 1:1000

## Images



Western Blot analysis of lysates of SY-SY5Y cell, using primary antibody at 1:1000 dilution.

---

Note: This product is for in vitro research use only and is not intended for use in humans or animals.