

## Kv3.4/KCNC4 (Phospho-Ser15) Antibody

Catalog No: #12446



Package Size: #12446-1 50ul #12446-2 100ul

Orders: [order@signalwayantibody.com](mailto:order@signalwayantibody.com)Support: [tech@signalwayantibody.com](mailto:tech@signalwayantibody.com)

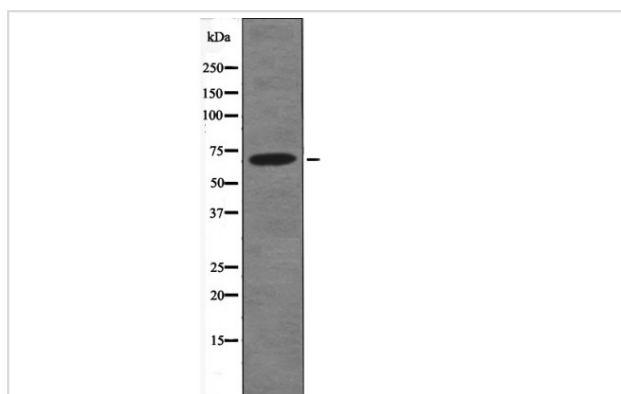
## Description

Product Name	Kv3.4/KCNC4 (Phospho-Ser15) Antibody
Host Species	Rabbit
Clonality	Polyclonal
Purification	Antibodies were produced by immunizing rabbits with synthetic phosphopeptide and KLH conjugates. Antibodies were purified by affinity-chromatography using epitope-specific phosphopeptide. Non-phospho specific antibodies were removed by chromatography using non-phosphopeptide.
Applications	WB
Species Reactivity	Hu Ms Rt
Specificity	Kv3.4/KCNC4 (Phospho-Ser15) Antibody detects endogenous levels of Kv3.4/KCNC4 only when phosphorylated at Ser15
Immunogen Type	Peptide
Immunogen Description	A synthesized peptide derived from human Kv3.4/KCNC4 (Phospho-Ser15)
Target Name	Kv3.4/KCNC4
Modification	Phospho
Other Names	KCNC4, C1orf30, HKSHIIC, K+ channel subunit, KSHIIC, KV3.4
Accession No.	Swiss-Prot#: Q03721NCBI Gene ID: 3749
Target Species	human
Calculated MW	70kd
Concentration	1.0mg/ml
Formulation	Rabbit IgG in phosphate buffered saline (without Mg <sup>2+</sup> and Ca <sup>2+</sup> ), pH 7.4, 150mM NaCl, 0.02% sodium azide and 50% glycerol.
Storage	Store at -20°C

## Application Details

Western blotting: 1:1000

## Images



Western blot analysis Kv3.4/KCNC4 (Phospho-Ser15) using TNF- $\alpha$  treated HeLa whole cell lysates

---

Note: This product is for in vitro research use only and is not intended for use in humans or animals.