

ASK1 (Phospho-Thr838) Antibody

Catalog No: #12463

Orders: order@signalwayantibody.comSupport: tech@signalwayantibody.com

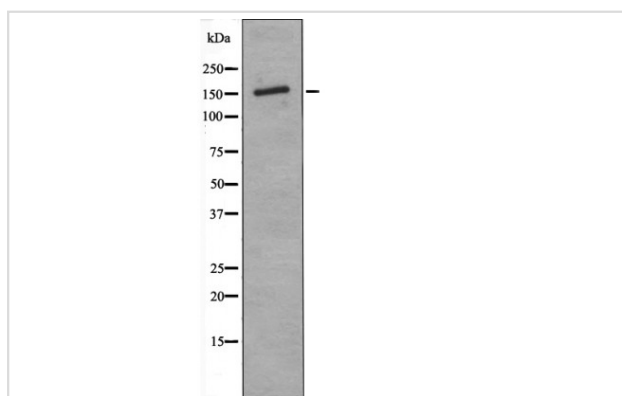
Description

Product Name	ASK1 (Phospho-Thr838) Antibody
Host Species	Rabbit
Clonality	Polyclonal
Purification	Antibodies were produced by immunizing rabbits with synthetic phosphopeptide and KLH conjugates. Antibodies were purified by affinity-chromatography using epitope-specific phosphopeptide. Non-phospho specific antibodies were removed by chromatography using non-phosphopeptide.
Applications	WB
Species Reactivity	Hu Ms
Specificity	ASK1 (Phospho-Thr838) Antibody detects endogenous levels of ASK1 only when phosphorylated at Thr838
Immunogen Type	Peptide
Immunogen Description	A synthesized peptide derived from human ASK1 (Phospho-Thr838)
Target Name	ASK1
Modification	Phospho
Other Names	MAP3K5, ASK-1, ASK1, MEKK5, MEK kinase 5, MEKK 5, MAPK/ERK kinase kinase 5, MAPKKK5, MAP/ERK kinase kinase 5
Accession No.	Swiss-Prot#: Q99683NCBI Gene ID: 4217
Target Species	human
Calculated MW	155kd
Concentration	1.0mg/ml
Formulation	Rabbit IgG in phosphate buffered saline (without Mg ²⁺ and Ca ²⁺), pH 7.4, 150mM NaCl, 0.02% sodium azide and 50% glycerol.
Storage	Store at -20°C

Application Details

Western blotting: 1:1000

Images



Western blot analysis ASK1 (Phospho-Thr838) using PMA treated K562 whole cell lysates

Note: This product is for in vitro research use only and is not intended for use in humans or animals.