

ATM (Phospho-Ser1893) Antibody

Catalog No: #12466



Package Size: #12466-1 50ul #12466-2 100ul

Orders: order@signalwayantibody.com

Support: tech@signalwayantibody.com

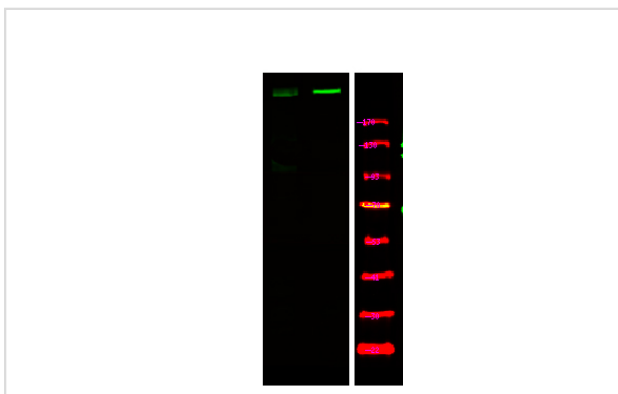
Description

Product Name	ATM (Phospho-Ser1893) Antibody
Host Species	Rabbit
Clonality	Polyclonal
Purification	Antibodies were produced by immunizing rabbits with synthetic phosphopeptide and KLH conjugates. Antibodies were purified by affinity-chromatography using epitope-specific phosphopeptide. Non-phospho specific antibodies were removed by chromatography using non-phosphopeptide.
Applications	WB
Species Reactivity	Hu
Specificity	ATM (Phospho-Ser1893) Antibody detects endogenous levels of ATM only when phosphorylated at Ser1893
Immunogen Type	Peptide
Immunogen Description	A synthesized peptide derived from human ATM (Phospho-Ser183)
Target Name	ATM
Modification	Phospho
Other Names	ATM, A-T mutated, ATA, ATC, ATD, ATE, AT mutated, Ataxia telangiectasia, ATDC, Serine-protein kinase ATM, AT1, Ataxia telangiectasia mutated, TEL1, TELO1
Target Species	human
Calculated MW	350kd
Concentration	1.0mg/ml
Formulation	Rabbit IgG in phosphate buffered saline (without Mg ²⁺ and Ca ²⁺), pH 7.4, 150mM NaCl, 0.02% sodium azide and 50% glycerol.
Storage	Store at -20°C

Application Details

Western blotting: 1:1000

Images



Western Blot analysis of lysates of K562 cell (Left) and K562 cell treated with 100ng/mL LPS for 30min (Right), using primary antibody at 1:1000 dilution.

Note: This product is for in vitro research use only and is not intended for use in humans or animals.