

## Caveolin 2 (Phospho-Ser36) Antibody

Catalog No: #12469



Package Size: #12469-1 50ul #12469-2 100ul

Orders: [order@signalwayantibody.com](mailto:order@signalwayantibody.com)Support: [tech@signalwayantibody.com](mailto:tech@signalwayantibody.com)

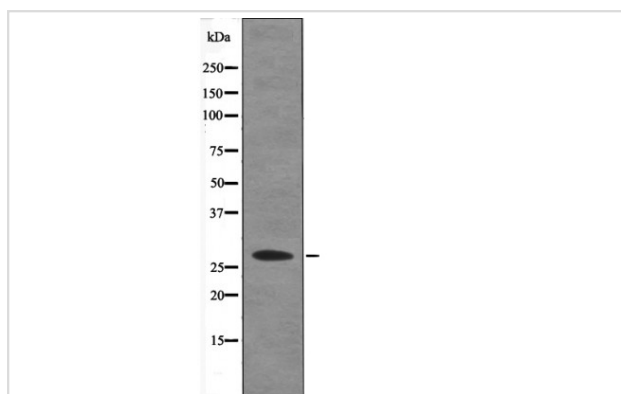
## Description

Product Name	Caveolin 2 (Phospho-Ser36) Antibody
Host Species	Rabbit
Clonality	Polyclonal
Purification	Antibodies were produced by immunizing rabbits with synthetic phosphopeptide and KLH conjugates. Antibodies were purified by affinity-chromatography using epitope-specific phosphopeptide. Non-phospho specific antibodies were removed by chromatography using non-phosphopeptide.
Applications	WB
Species Reactivity	Hu
Specificity	Caveolin 2 (Phospho-Ser36) Antibody detects endogenous levels of Caveolin 2 only when phosphorylated at Ser36
Immunogen Type	Peptide
Immunogen Description	A synthesized peptide derived from human Caveolin 2 (Phospho-Ser36)
Target Name	Caveolin 2
Modification	Phospho
Other Names	CAV2, Caveolin 2 isoform a and b, Caveolin-2, CAV, Caveolae protein, 20-kD, Caveolin 2
Accession No.	Swiss-Prot#: P51636NCBI Gene ID: 858
Target Species	human
Calculated MW	27kd
Concentration	1.0mg/ml
Formulation	Rabbit IgG in phosphate buffered saline (without Mg <sup>2+</sup> and Ca <sup>2+</sup> ), pH 7.4, 150mM NaCl, 0.02% sodium azide and 50% glycerol.
Storage	Store at -20°C

## Application Details

Western blotting: 1:1000

## Images



Western blot analysis Caveolin 2 (Phospho-Ser36) using Insulin treated HT29 whole cell lysates

---

Note: This product is for in vitro research use only and is not intended for use in humans or animals.