

## CDC25A (Phospho-Ser82) Antibody

Catalog No: #12470



Package Size: #12470-1 50ul #12470-2 100ul

Orders: [order@signalwayantibody.com](mailto:order@signalwayantibody.com)Support: [tech@signalwayantibody.com](mailto:tech@signalwayantibody.com)

## Description

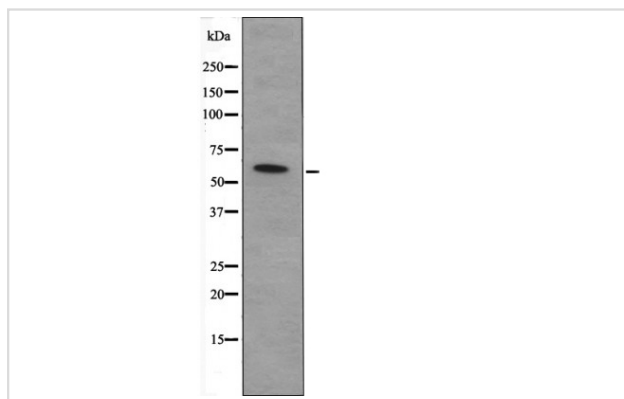
Product Name	CDC25A (Phospho-Ser82) Antibody
Host Species	Rabbit
Clonality	Polyclonal
Purification	Antibodies were produced by immunizing rabbits with synthetic phosphopeptide and KLH conjugates. Antibodies were purified by affinity-chromatography using epitope-specific phosphopeptide. Non-phospho specific antibodies were removed by chromatography using non-phosphopeptide.
Applications	WB
Species Reactivity	Hu Ms Rt
Specificity	CDC25A (Phospho-Ser82) Antibody detects endogenous levels of CDC25A only when phosphorylated at Ser82
Immunogen Type	Peptide
Immunogen Description	A synthesized peptide derived from human CDC25A (Phospho-Ser82)
Target Name	CDC25A
Modification	Phospho
Other Names	CDC25A, CDC25A2-CAG isoform, Cell division cycle 25A, CDC25A phosphatase, CDC25Hu1, M-phase inducer phosphatase 1, CDC25A2
Accession No.	Swiss-Prot#: P30304NCBI Gene ID: 993
Target Species	human
Calculated MW	59kd
Concentration	1.0mg/ml
Formulation	Rabbit IgG in phosphate buffered saline (without Mg <sup>2+</sup> and Ca <sup>2+</sup> ), pH 7.4, 150mM NaCl, 0.02% sodium azide and 50% glycerol.
Storage	Store at -20°C

## Application Details

Western blotting: 1:1000

## Images

Western blot analysis CDC25A (Phospho-Ser82) using Mouse hearttissue lysates



Note: This product is for in vitro research use only and is not intended for use in humans or animals.