

FKHRL1 (Phospho-Ser315) Antibody

Catalog No: #12475



Package Size: #12475-1 50ul #12475-2 100ul

Orders: order@signalwayantibody.comSupport: tech@signalwayantibody.com

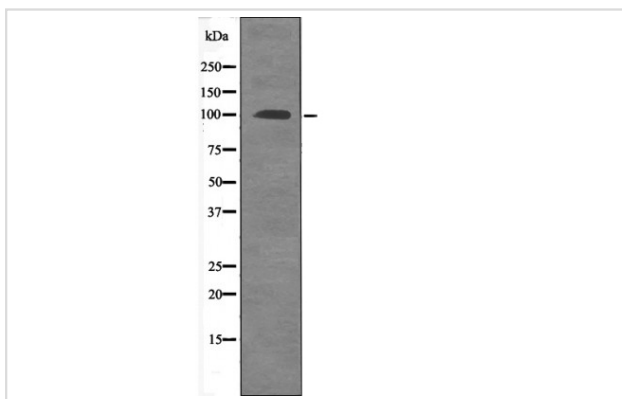
Description

Product Name	FKHRL1 (Phospho-Ser315) Antibody
Host Species	Rabbit
Clonality	Polyclonal
Purification	Antibodies were produced by immunizing rabbits with synthetic phosphopeptide and KLH conjugates. Antibodies were purified by affinity-chromatography using epitope-specific phosphopeptide. Non-phospho specific antibodies were removed by chromatography using non-phosphopeptide.
Applications	WB
Species Reactivity	Hu Ms Rt
Specificity	FKHRL1 (Phospho-Ser315) Antibody detects endogenous levels of FKHRL1 only when phosphorylated at Ser315
Immunogen Type	Peptide
Immunogen Description	A synthesized peptide derived from human FKHRL1 (Phospho-Ser315)
Target Name	FKHRL1
Modification	Phospho
Other Names	FOXO3, AF6q21, AF6q21 protein, Forkhead box O3, Forkhead box O3A, FOXO3A, FKHRL1P2, Forkhead box protein O3, FOXO2, FKHRL1
Accession No.	Swiss-Prot#: O43524NCBI Gene ID: 2309
Target Species	human
Calculated MW	97kd
Concentration	1.0mg/ml
Formulation	Rabbit IgG in phosphate buffered saline (without Mg ²⁺ and Ca ²⁺), pH 7.4, 150mM NaCl, 0.02% sodium azide and 50% glycerol.
Storage	Store at -20°C

Application Details

Western blotting: 1:1000

Images



Western blot analysis FKHL1 (Phospho-Ser315) using EGF treated 293 whole cell lysates

Published Papers

el at., The poly (ADP-ribosyl) ation of FoxO3 mediated by PARP1 participates in isoproterenol-induced cardiac hypertrophy. In *Biochim Biophys Acta* on 2016 Dec by Jing Lu, Renwei Zhang, et al..PMID: 27686254, , (2016)

[PMID:27686254](#)

Note: This product is for in vitro research use only and is not intended for use in humans or animals.