

AFX1 (Phospho-Thr455) Antibody

Catalog No: #12477



Package Size: #12477-1 50ul #12477-2 100ul

Orders: order@signalwayantibody.com

Support: tech@signalwayantibody.com

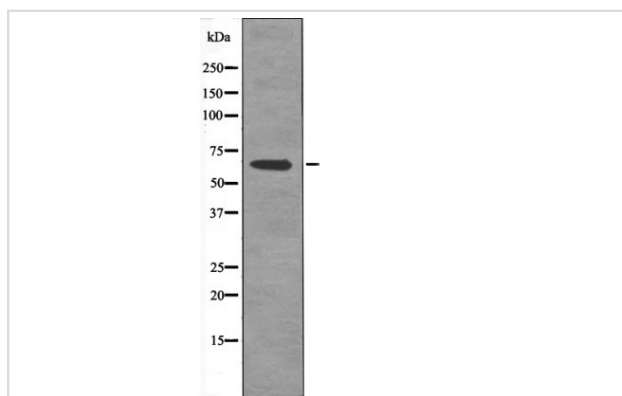
Description

Product Name	AFX1 (Phospho-Thr455) Antibody
Host Species	Rabbit
Clonality	Polyclonal
Purification	Antibodies were produced by immunizing rabbits with synthetic phosphopeptide and KLH conjugates. Antibodies were purified by affinity-chromatography using epitope-specific phosphopeptide. Non-phospho specific antibodies were removed by chromatography using non-phosphopeptide.
Applications	WB
Species Reactivity	Hu
Specificity	AFX1 (Phospho-Thr455) Antibody detects endogenous levels of AFX1 only when phosphorylated at Thr455
Immunogen Type	Peptide
Immunogen Description	A synthesized peptide derived from human AFX1 (Phospho-Thr455)
Target Name	AFX1
Modification	Phospho
Other Names	FOXO4, AFX, AFX1, Forkhead box O4, Forkhead box protein O4, MLLT7
Accession No.	Swiss-Prot#: P98177NCBI Gene ID: 4303
Target Species	human
Calculated MW	65kd
Concentration	1.0mg/ml
Formulation	Rabbit IgG in phosphate buffered saline (without Mg ²⁺ and Ca ²⁺), pH 7.4, 150mM NaCl, 0.02% sodium azide and 50% glycerol.
Storage	Store at -20°C

Application Details

Western blotting: 1:1000

Images



Western blot analysis AFX1 (Phospho-Thr455) using Forskolin treated 293 whole cell lysates

Note: This product is for in vitro research use only and is not intended for use in humans or animals.