

Retinoblastoma (Phospho-Thr252) Antibody

Catalog No: #12482

Package Size: #12482-1 50ul #12482-2 100ul

Orders: order@signalwayantibody.comSupport: tech@signalwayantibody.com

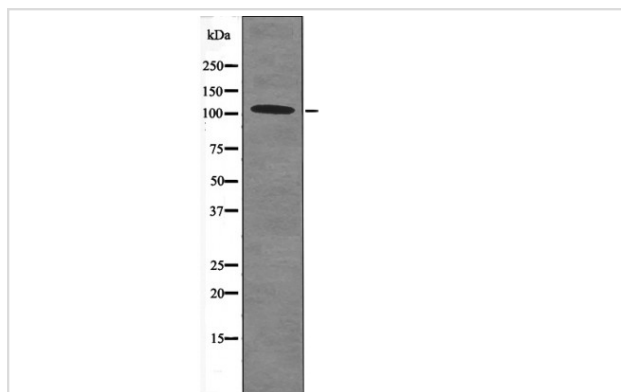
Description

Product Name	Retinoblastoma (Phospho-Thr252) Antibody
Host Species	Rabbit
Clonality	Polyclonal
Purification	Antibodies were produced by immunizing rabbits with synthetic phosphopeptide and KLH conjugates. Antibodies were purified by affinity-chromatography using epitope-specific phosphopeptide. Non-phospho specific antibodies were removed by chromatography using non-phosphopeptide.
Applications	WB
Species Reactivity	Hu Ms Rt
Specificity	Retinoblastoma (Phospho-Thr252) Antibody detects endogenous levels of Retinoblastoma only when phosphorylated at Thr252
Immunogen Type	Peptide
Immunogen Description	A synthesized peptide derived from human Retinoblastoma (Phospho-Thr252)
Target Name	Retinoblastoma
Modification	Phospho
Other Names	RB1, p105-Rb, Osteosarcoma, PRb, Retinoblastoma, Retinoblastoma 1, OSRC, RB, Pp110
Accession No.	Swiss-Prot#: P06400NCBI Gene ID: 5925
Target Species	human
Calculated MW	110kd
Concentration	1.0mg/ml
Formulation	Rabbit IgG in phosphate buffered saline (without Mg ²⁺ and Ca ²⁺), pH 7.4, 150mM NaCl, 0.02% sodium azide and 50% glycerol.
Storage	Store at -20°C

Application Details

Western blotting: 1:1000

Images



Western blot analysis Retinoblastoma (Phospho-Thr252) using HeLa whole cell lysates

Note: This product is for in vitro research use only and is not intended for use in humans or animals.