

## BLK (Phospho-Tyr389) Antibody

Catalog No: #12489

Orders: [order@signalwayantibody.com](mailto:order@signalwayantibody.com)Support: [tech@signalwayantibody.com](mailto:tech@signalwayantibody.com)

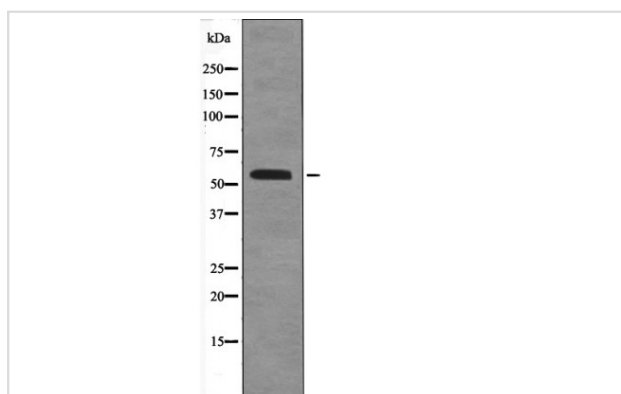
## Description

Product Name	BLK (Phospho-Tyr389) Antibody
Host Species	Rabbit
Clonality	Polyclonal
Purification	Antibodies were produced by immunizing rabbits with synthetic phosphopeptide and KLH conjugates. Antibodies were purified by affinity-chromatography using epitope-specific phosphopeptide. Non-phospho specific antibodies were removed by chromatography using non-phosphopeptide.
Applications	WB
Species Reactivity	Hu Ms Rt
Specificity	BLK (Phospho-Tyr389) Antibody detects endogenous levels of BLK only when phosphorylated at Tyr389
Immunogen Type	Peptide
Immunogen Description	A synthesized peptide derived from human BLK (Phospho-Tyr389)
Target Name	BLK
Modification	Phospho
Other Names	BLK, Blk kinase, B lymphocyte kinase, B lymphoid tyrosine kinase, MODY11, Protein kinase blk, Protein tyrosine kinase blk, B lymphoid kinase, p55-BLK, Tyrosine-protein kinase Blk
Accession No.	Swiss-Prot#: P51451NCBI Gene ID: 640
Target Species	human
Calculated MW	58kd
Concentration	1.0mg/ml
Formulation	Rabbit IgG in phosphate buffered saline (without Mg <sup>2+</sup> and Ca <sup>2+</sup> ), pH 7.4, 150mM NaCl, 0.02% sodium azide and 50% glycerol.
Storage	Store at -20°C

## Application Details

Western blotting: 1:1000

## Images



Western blot analysis BLK (Phospho-Tyr389) using PI3-kinase H<sub>2</sub>O<sub>2</sub> treated COS7 whole cell lysates

---

Note: This product is for in vitro research use only and is not intended for use in humans or animals.