

## BRSK2 (Phospho-Thr260) Antibody

Catalog No: #12491



Package Size: #12491-1 50ul #12491-2 100ul

Orders: [order@signalwayantibody.com](mailto:order@signalwayantibody.com)Support: [tech@signalwayantibody.com](mailto:tech@signalwayantibody.com)

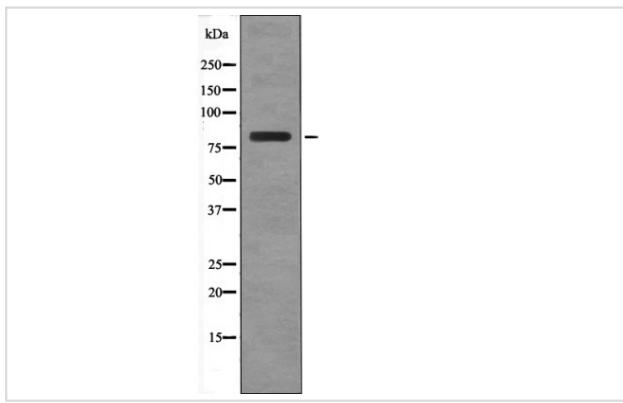
## Description

Product Name	BRSK2 (Phospho-Thr260) Antibody
Host Species	Rabbit
Clonality	Polyclonal
Purification	Antibodies were produced by immunizing rabbits with synthetic phosphopeptide and KLH conjugates. Antibodies were purified by affinity-chromatography using epitope-specific phosphopeptide. Non-phospho specific antibodies were removed by chromatography using non-phosphopeptide.
Applications	WB
Species Reactivity	Hu Ms
Specificity	BRSK2 (Phospho-Thr260) Antibody detects endogenous levels of BRSK2 only when phosphorylated at Thr260
Immunogen Type	Peptide
Immunogen Description	A synthesized peptide derived from human BRSK2 (Phospho-Thr260)
Target Name	BRSK2
Modification	Phospho
Other Names	BRSK2, BR serine/threonine kinase 2, Brain-selective kinase 2, C11orf7, Protein kinase SAD1B, SAD1, SADA, PEN11B, STK29
Accession No.	Swiss-Prot#: Q8IWQ3NCBI Gene ID: 9024
Target Species	human
Calculated MW	82kd
Concentration	1.0mg/ml
Formulation	Rabbit IgG in phosphate buffered saline (without Mg <sup>2+</sup> and Ca <sup>2+</sup> ), pH 7.4, 150mM NaCl, 0.02% sodium azide and 50% glycerol.
Storage	Store at -20°C

## Application Details

Western blotting: 1:1000

## Images



Western blot analysis BRSK2 (Phospho-Thr260) using EGF treated RAW264.7 whole cell lysates

---

Note: This product is for in vitro research use only and is not intended for use in humans or animals.