

EPHA8 (Phospho-Tyr838) Antibody

Catalog No: #12499



Package Size: #12499-1 50ul #12499-2 100ul

Orders: order@signalwayantibody.comSupport: tech@signalwayantibody.com

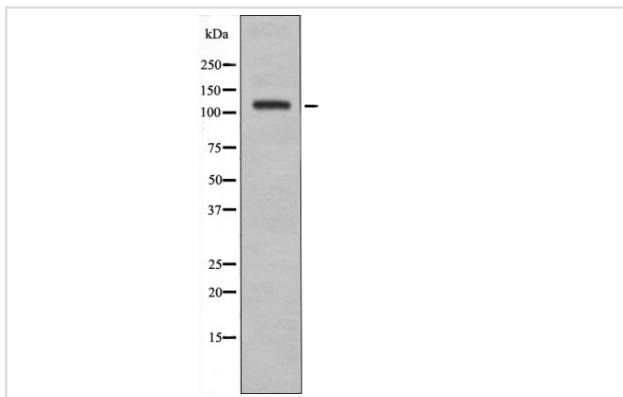
Description

Product Name	EPHA8 (Phospho-Tyr838) Antibody
Host Species	Rabbit
Clonality	Polyclonal
Purification	Antibodies were produced by immunizing rabbits with synthetic phosphopeptide and KLH conjugates. Antibodies were purified by affinity-chromatography using epitope-specific phosphopeptide. Non-phospho specific antibodies were removed by chromatography using non-phosphopeptide.
Applications	WB
Species Reactivity	Hu Ms
Specificity	EPHA8 (Phospho-Tyr838) Antibody detects endogenous levels of EPHA8 only when phosphorylated at Tyr838
Immunogen Type	Peptide
Immunogen Description	A synthesized peptide derived from human EPHA8 (Phospho-Tyr838)
Target Name	EPHA8
Modification	Phospho
Other Names	EPHA8, EEK, EPH- and ELK-related kinase, EK3, EPH receptor A8, EPH-like kinase 3, Ephrin type-A receptor 8, HEK3, Hydroxyaryl-protein kinase, KIAA1459, Tyrosylprotein kinase, Hek3 kinase, Protein-tyrosine kinase
Accession No.	Swiss-Prot#: P29322NCBI Gene ID: 2046
Target Species	human
Calculated MW	111kd
Concentration	1.0mg/ml
Formulation	Rabbit IgG in phosphate buffered saline (without Mg ²⁺ and Ca ²⁺), pH 7.4, 150mM NaCl, 0.02% sodium azide and 50% glycerol.
Storage	Store at -20°C

Application Details

Western blotting: 1:1000

Images



Western blot analysis EPHA8 (Phospho-Tyr838) using UV treated A2780 whole cell lysates

Note: This product is for in vitro research use only and is not intended for use in humans or animals.