

MAP3K2 (Phospho-Ser520) Antibody

Catalog No: #12516

Orders: order@signalwayantibody.comSupport: tech@signalwayantibody.com

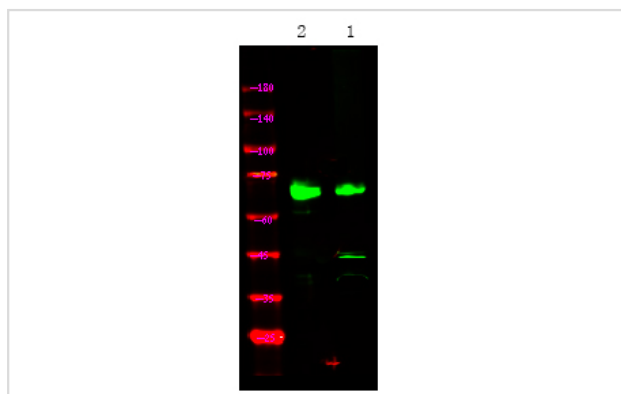
Description

Product Name	MAP3K2 (Phospho-Ser520) Antibody
Host Species	Rabbit
Clonality	Polyclonal
Purification	Antibodies were produced by immunizing rabbits with synthetic phosphopeptide and KLH conjugates. Antibodies were purified by affinity-chromatography using epitope-specific phosphopeptide. Non-phospho specific antibodies were removed by chromatography using non-phosphopeptide.
Applications	WB
Species Reactivity	Hu Ms
Specificity	MAP3K2 (Phospho-Ser520) Antibody detects endogenous levels of MAP3K2 only when phosphorylated at Ser520
Immunogen Type	Peptide
Immunogen Description	A synthesized peptide derived from human MAP3K2 (Phospho-Ser520)
Target Name	MAP3K2
Modification	Phospho
Other Names	MAP3K2, MAP/ERK kinase kinase 2, MAPK/ERK kinase kinase 2, MAPKKK2, MEK kinase 2, MEKK 2, MEKK2, MEKK2B
Accession No.	Swiss-Prot#: Q9Y2U5NCBI Gene ID: 10746
Target Species	human
Calculated MW	70kd
Concentration	1.0mg/ml
Formulation	Rabbit IgG in phosphate buffered saline (without Mg ²⁺ and Ca ²⁺), pH 7.4, 150mM NaCl, 0.02% sodium azide and 50% glycerol.
Storage	Store at -20°C

Application Details

Western blotting: 1:1000

Images



Western Blot analysis of lysates of mouse liver, using primary antibody at 1:1000 dilution.

Note: This product is for in vitro research use only and is not intended for use in humans or animals.