

Angiotensin antibody

Catalog No: #22961



Orders: order@signalwayantibody.com

Support: tech@signalwayantibody.com

Description

Product Name	Angiotensin antibody
Host Species	Rabbit
Clonality	Polyclonal
Purification	Purified by antigen-affinity chromatography.
Applications	WB IHC IF
Species Reactivity	Hu
Immunogen Type	Recombinant protein
Immunogen Description	Recombinant protein fragment contain a sequence corresponding to a region within amino acids 1 and 446 of Human AGT
Target Name	Angiotensin
Other Names	ANHU; FLJ92595; FLJ97926; SERPINA8
Accession No.	NCBI Gene ID: 183NCBI mRNA#: NM_000029NCBI Protein#: NP_000020
Concentration	1mg/ml
Formulation	Supplied in 0.1M Tris-buffered saline with 10% Glycerol (pH7.0). 0.01% Thimerosal was added as a preservative.
Storage	Store at -20°C for long term preservation (recommended). Store at 4°C for short term use.

Application Details

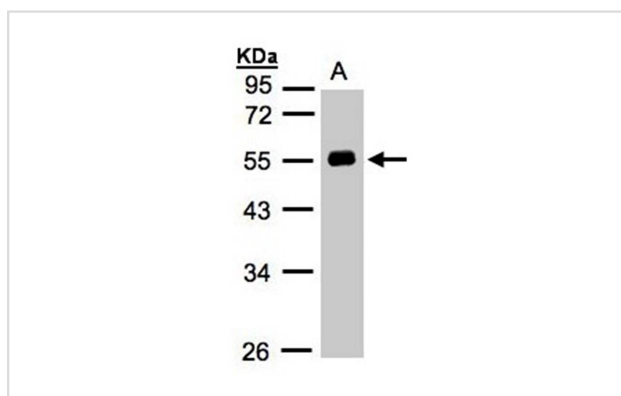
Predicted MW: 53kd

Western blotting: 1:500-1:3000

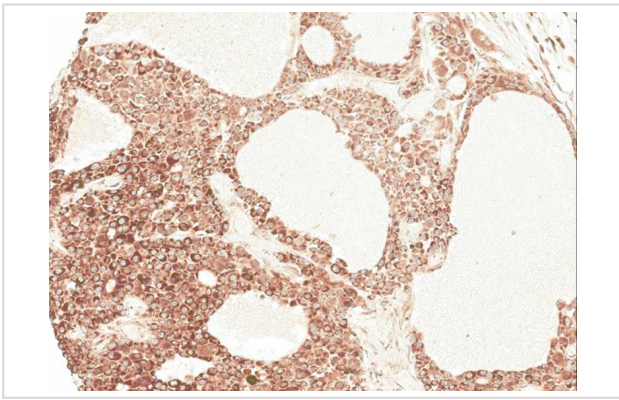
Immunohistochemistry: 1:100-1:250

Immunofluorescence: 1:100-1:200

Images



Sample(30 ug whole cell lysate)
 A: Hep G2
 10% SDS PAGE
 Primary antibody diluted at 1: 1000



Immunohistochemical analysis of paraffin-embedded Hepatocellular carcinoma Huh7 xenograft, using AGT antibody at 1: 100 dilution.



Immunofluorescence analysis of methanol-fixed HepG2, using Angiotensinogen antibody at 1: 200 dilution.

Background

The protein encoded by this gene, pre-angiotensinogen or angiotensinogen precursor, is expressed in the liver and is cleaved by the enzyme renin in response to lowered blood pressure. The resulting product, angiotensin I, is then cleaved by angiotensin converting enzyme (ACE) to generate the physiologically active enzyme angiotensin II. The protein is involved in maintaining blood pressure and in the pathogenesis of essential hypertension and preeclampsia. Mutations in this gene are associated with susceptibility to essential hypertension, and can cause renal tubular dysgenesis, a severe disorder of renal tubular development. Defects in this gene have also been associated with non-familial structural atrial fibrillation, and inflammatory bowel disease. [provided by RefSeq]

Note: This product is for in vitro research use only and is not intended for use in humans or animals.