

p38- $\gamma/\delta$  (Phospho-Tyr185/182) Antibody

Catalog No: #12523

Orders: [order@signalwayantibody.com](mailto:order@signalwayantibody.com)Support: [tech@signalwayantibody.com](mailto:tech@signalwayantibody.com)

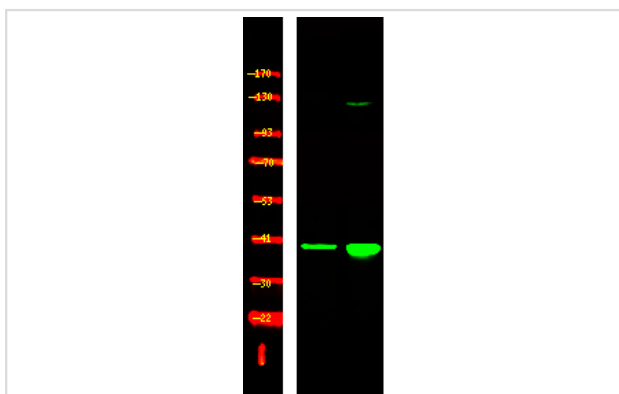
## Description

Product Name	p38- $\gamma/\delta$ (Phospho-Tyr185/182) Antibody
Host Species	Rabbit
Clonality	Polyclonal
Purification	Antibodies were produced by immunizing rabbits with synthetic phosphopeptide and KLH conjugates. Antibodies were purified by affinity-chromatography using epitope-specific phosphopeptide. Non-phospho specific antibodies were removed by chromatography using non-phosphopeptide.
Applications	WB
Species Reactivity	Hu Ms Rt
Specificity	p38- $\gamma/\delta$ (Phospho-Tyr185/182) Antibody detects endogenous levels of p38- $\gamma/\delta$ only when phosphorylated at Tyr185/182
Immunogen Type	Peptide
Immunogen Description	A synthesized peptide derived from human p38- $\gamma/\delta$ (Phospho-Tyr185/182)
Target Name	p38- $\gamma/\delta$
Modification	Phospho
Other Names	MAPK12, ERK5, ERK6, ERK-6, MAP kinase 12, MAPK 12, MAP kinase p38 gamma, SAPK3, p38-gamma, p38GAMMA, SAPK-3, ERK3, PRKM12
Accession No.	Swiss-Prot#: P53778/O15264NCBI Gene ID: 6300/5603
Target Species	human
Calculated MW	43kd
Concentration	1.0mg/ml
Formulation	Rabbit IgG in phosphate buffered saline (without Mg <sup>2+</sup> and Ca <sup>2+</sup> ), pH 7.4, 150mM NaCl, 0.02% sodium azide and 50% glycerol.
Storage	Store at -20°C

## Application Details

Western blotting: 1:1000

## Images



Western Blot analysis of lysates of 1. Hela cell and 2. Hela cell treated with 100ng/mL LPS for 30min, using primary antibody at 1:1000 dilution.

---

Note: This product is for in vitro research use only and is not intended for use in humans or animals.