

## p70 S6 Kinase (Phospho-Ser427) Antibody

Catalog No: #12524



Package Size: #12524-1 50ul #12524-2 100ul

Orders: [order@signalwayantibody.com](mailto:order@signalwayantibody.com)Support: [tech@signalwayantibody.com](mailto:tech@signalwayantibody.com)

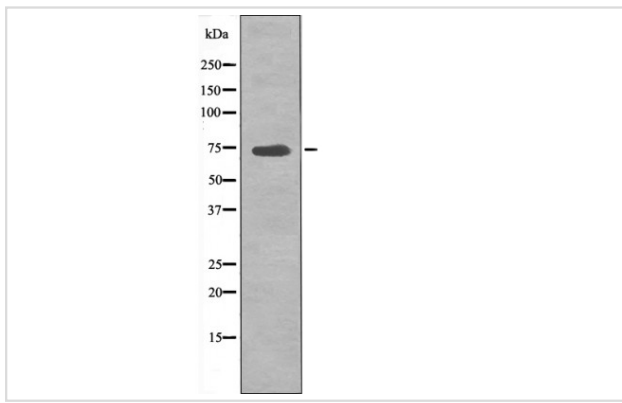
## Description

Product Name	p70 S6 Kinase (Phospho-Ser427) Antibody
Host Species	Rabbit
Clonality	Polyclonal
Purification	Antibodies were produced by immunizing rabbits with synthetic phosphopeptide and KLH conjugates. Antibodies were purified by affinity-chromatography using epitope-specific phosphopeptide. Non-phospho specific antibodies were removed by chromatography using non-phosphopeptide.
Applications	WB
Species Reactivity	Hu Ms Rt
Specificity	p70 S6 Kinase (Phospho-Ser427) Antibody detects endogenous levels of p70 S6 Kinase only when phosphorylated at Ser427
Immunogen Type	Peptide
Immunogen Description	A synthesized peptide derived from human p70 S6 Kinase (Phospho-Ser427)
Target Name	p70 S6 Kinase
Modification	Phospho
Other Names	RPS6KB1, 70 kDa S6 kinase, p70 S6KA, p70-alpha, p70-S6K, p70 S6 kinase alpha, p70s6 kinase, S6K-beta-1, STK14A, p70 ribosomal S6 kinase, p70 S6 kinase, alpha 1, p70 S6 kinase, alpha 2, p70 S6K-alpha, p70-S6K 1, p70S6K, p70S6K1, PS6K, Ribosomal protei ...
Accession No.	Swiss-Prot#: P23443NCBI Gene ID: 6198
Target Species	human
Calculated MW	70kd
Concentration	1.0mg/ml
Formulation	Rabbit IgG in phosphate buffered saline (without Mg <sup>2+</sup> and Ca <sup>2+</sup> ), pH 7.4, 150mM NaCl, 0.02% sodium azide and 50% glycerol.
Storage	Store at -20°C

## Application Details

Western blotting: 1:1000

## Images



Western blot analysis p70 S6 Kinase (Phospho-Ser427) using HeLa whole cell lysates

---

Note: This product is for in vitro research use only and is not intended for use in humans or animals.