

## RSK3 (Phospho-Ser360) Antibody

Catalog No: #12532



Package Size: #12532-1 50ul #12532-2 100ul

Orders: [order@signalwayantibody.com](mailto:order@signalwayantibody.com)Support: [tech@signalwayantibody.com](mailto:tech@signalwayantibody.com)

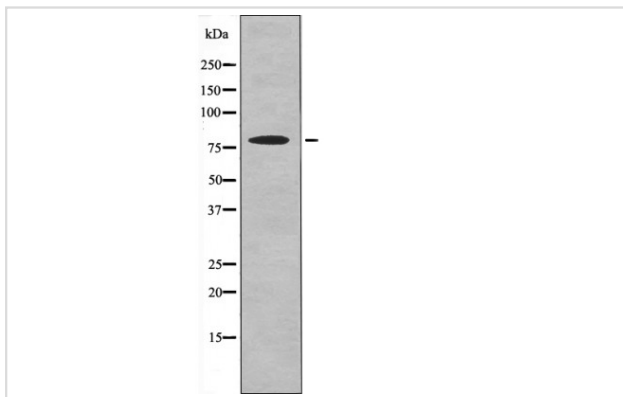
## Description

Product Name	RSK3 (Phospho-Ser360) Antibody
Host Species	Rabbit
Clonality	Polyclonal
Purification	Antibodies were produced by immunizing rabbits with synthetic phosphopeptide and KLH conjugates. Antibodies were purified by affinity-chromatography using epitope-specific phosphopeptide. Non-phospho specific antibodies were removed by chromatography using non-phosphopeptide.
Applications	WB
Species Reactivity	Hu Ms
Specificity	RSK3 (Phospho-Ser360) Antibody detects endogenous levels of RSK3 only when phosphorylated at Ser360
Immunogen Type	Peptide
Immunogen Description	A synthesized peptide derived from human RSK3 (Phospho-Ser360)
Target Name	RSK3
Modification	Phospho
Other Names	RPS6KA2, HU-2, MAPKAPK-1c, MAPKAPK1C, p90 ribosomal s6 kinase 3, p90RSK2, Pp90RSK3, Ribosomal S6 kinase 3, RSK-3, S6K-alpha, p90-RSK3, RSK, RSK3, S6K-alpha-2, S6K-alpha2, MAPKAP kinase 1c, p90-RSK 2
Accession No.	Swiss-Prot#: Q15349NCBI Gene ID: 6196
Target Species	human
Calculated MW	83kd
Concentration	1.0mg/ml
Formulation	Rabbit IgG in phosphate buffered saline (without Mg <sup>2+</sup> and Ca <sup>2+</sup> ), pH 7.4, 150mM NaCl, 0.02% sodium azide and 50% glycerol.
Storage	Store at -20°C

## Application Details

Western blotting: 1:1000

## Images



Western blot analysis RSK3 (Phospho-Ser360) using EGF treated Jurkat whole cell lysates

---

Note: This product is for in vitro research use only and is not intended for use in humans or animals.