

TIE2 (Phospho-Ser1119) Antibody

Catalog No: #12536



Package Size: #12536-1 50ul #12536-2 100ul

Orders: order@signalwayantibody.comSupport: tech@signalwayantibody.com

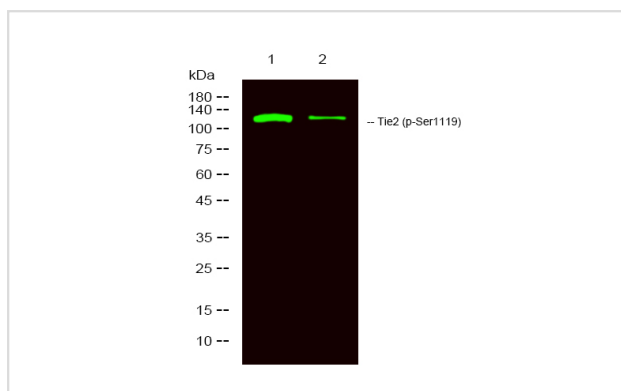
Description

Product Name	TIE2 (Phospho-Ser1119) Antibody
Host Species	Rabbit
Clonality	Polyclonal
Purification	Antibodies were produced by immunizing rabbits with synthetic phosphopeptide and KLH conjugates. Antibodies were purified by affinity-chromatography using epitope-specific phosphopeptide. Non-phospho specific antibodies were removed by chromatography using non-phosphopeptide.
Applications	WB
Species Reactivity	Hu Ms
Specificity	TIE2 (Phospho-Ser1119) Antibody detects endogenous levels of TIE2 only when phosphorylated at Ser1119
Immunogen Type	Peptide
Immunogen Description	A synthesized peptide derived from human TIE2 (Phospho-Ser1119)
Target Name	TIE2
Modification	Phospho
Other Names	TEK, Angiopoietin-1 receptor, CD202b antigen, CD202B, Endothelial tyrosine kinase, HTIE2, Hyk, Soluble TIE2 variant 1, Soluble TIE2 variant 2, TIE-2, TIE2, VMCM, Tek tyrosine kinase, VMCM1, p140 TEK
Accession No.	Swiss-Prot#: Q02763NCBI Gene ID: 7010
Target Species	human
Calculated MW	126kd
Concentration	1.0mg/ml
Formulation	Rabbit IgG in phosphate buffered saline (without Mg ²⁺ and Ca ²⁺), pH 7.4, 150mM NaCl, 0.02% sodium azide and 50% glycerol.
Storage	Store at -20°C

Application Details

Western blotting: 1:1000

Images



Western Blot analysis of lysates of mouse lung and mouse liver, using primary antibody at 1:1000 dilution.

Note: This product is for in vitro research use only and is not intended for use in humans or animals.