

LAT (Phospho-Tyr161) Antibody

Catalog No: #12541



Package Size: #12541-1 50ul #12541-2 100ul

Orders: order@signalwayantibody.com

Support: tech@signalwayantibody.com

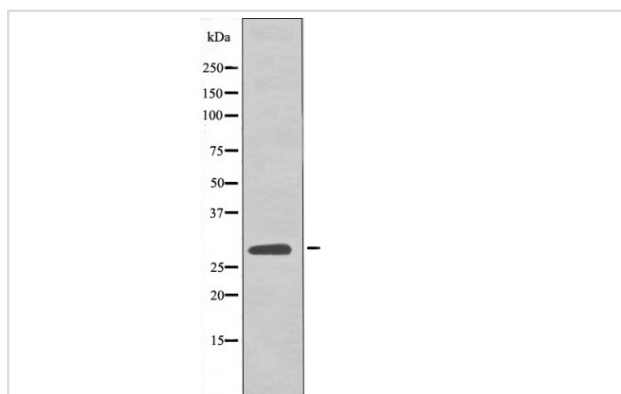
Description

Product Name	LAT (Phospho-Tyr161) Antibody
Host Species	Rabbit
Clonality	Polyclonal
Purification	Antibodies were produced by immunizing rabbits with synthetic phosphopeptide and KLH conjugates. Antibodies were purified by affinity-chromatography using epitope-specific phosphopeptide. Non-phospho specific antibodies were removed by chromatography using non-phosphopeptide.
Applications	WB
Species Reactivity	Hu
Specificity	LAT (Phospho-Tyr161) Antibody detects endogenous levels of LAT only when phosphorylated at Tyr161
Immunogen Type	Peptide
Immunogen Description	A synthesized peptide derived from human LAT (Phospho-Tyr161)
Target Name	LAT
Modification	Phospho
Other Names	LAT, p36-38, Pp36, LAT1
Accession No.	Swiss-Prot#: O43561NCBI Gene ID: 27040
Target Species	human
Calculated MW	28kd
Concentration	1.0mg/ml
Formulation	Rabbit IgG in phosphate buffered saline (without Mg ²⁺ and Ca ²⁺), pH 7.4, 150mM NaCl, 0.02% sodium azide and 50% glycerol.
Storage	Store at -20°C

Application Details

Western blotting: 1:1000

Images



Western blot analysis LAT (Phospho-Tyr161) using EGF treated 293 whole cell lysates

Note: This product is for in vitro research use only and is not intended for use in humans or animals.