

c-Ret (Phospho-Tyr981) Antibody

Catalog No: #12542

Package Size: #12542-1 50ul #12542-2 100ul

Orders: order@signalwayantibody.comSupport: tech@signalwayantibody.com

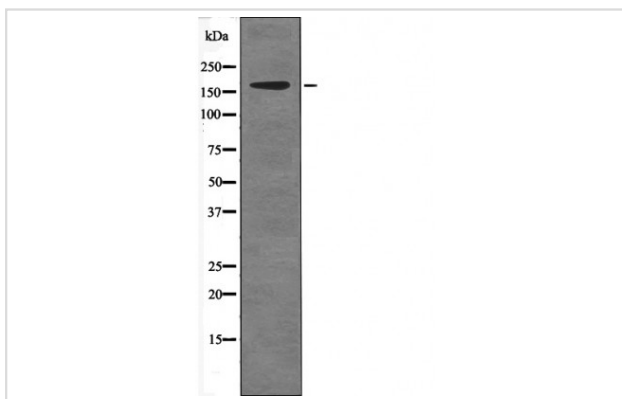
Description

Product Name	c-Ret (Phospho-Tyr981) Antibody
Host Species	Rabbit
Clonality	Polyclonal
Purification	Antibodies were produced by immunizing rabbits with synthetic phosphopeptide and KLH conjugates. Antibodies were purified by affinity-chromatography using epitope-specific phosphopeptide. Non-phospho specific antibodies were removed by chromatography using non-phosphopeptide.
Applications	WB
Species Reactivity	Hu Ms Rt
Specificity	c-Ret (Phospho-Tyr981) Antibody detects endogenous levels of c-Ret only when phosphorylated at Tyr981
Immunogen Type	Peptide
Immunogen Description	A synthesized peptide derived from human c-Ret (Phospho-Tyr981)
Target Name	c-Ret
Modification	Phospho
Other Names	RET, Cadherin family member 12, CDHF12, C-ret, Hirschsprung disease 1, HSCR1, Hydroxyaryl-protein kinase, Oncogene ret, Proto-oncogene c-Ret, RET-ELE1, RET51, Ret proto-oncogene, RET transforming sequence, RET43, Men2-ret, MEN2B, MTC1, Receptor tyros ...
Accession No.	Swiss-Prot#: P07949NCBI Gene ID: 5979
Target Species	human
Calculated MW	175kd
Concentration	1.0mg/ml
Formulation	Rabbit IgG in phosphate buffered saline (without Mg ²⁺ and Ca ²⁺), pH 7.4, 150mM NaCl, 0.02% sodium azide and 50% glycerol.
Storage	Store at -20°C

Application Details

Western blotting: 1:1000

Images



Western blot analysis c-Ret (Phospho-Tyr981) using EGF treated A431 whole cell lysates

Note: This product is for in vitro research use only and is not intended for use in humans or animals.