

## TRF2 (Phospho-Thr188) Antibody

Catalog No: #12549



Package Size: #12549-1 50ul #12549-2 100ul

Orders: order@signalwayantibody.com

Support: tech@signalwayantibody.com

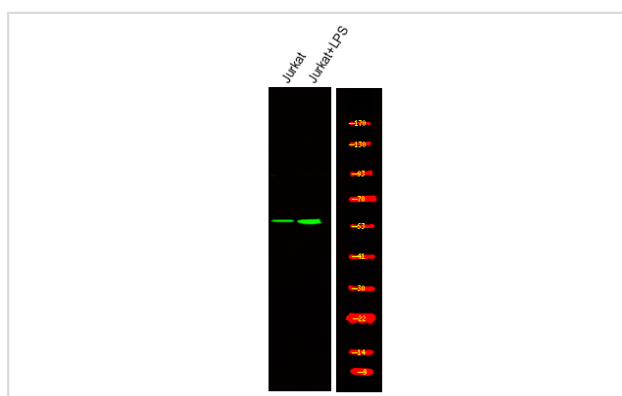
## Description

Product Name	TRF2 (Phospho-Thr188) Antibody
Host Species	Rabbit
Clonality	Polyclonal
Purification	Antibodies were produced by immunizing rabbits with synthetic phosphopeptide and KLH conjugates. Antibodies were purified by affinity-chromatography using epitope-specific phosphopeptide. Non-phospho specific antibodies were removed by chromatography using non-phosphopeptide.
Applications	WB
Species Reactivity	Hu Ms Rt
Specificity	TRF2 (Phospho-Thr188) Antibody detects endogenous levels of TRF2 only when phosphorylated at Thr188
Immunogen Type	Peptide
Immunogen Description	A synthesized peptide derived from human TRF2 (Phospho-Thr188)
Target Name	TRF2
Modification	Phospho
Other Names	TERF2, TRF2, TRBF2, TTAGGG repeat-binding factor 2, Telomeric DNA-binding protein
Accession No.	Swiss-Prot#: Q15554NCBI Gene ID: 7014
Target Species	human
Calculated MW	60kd
Concentration	1.0mg/ml
Formulation	Rabbit IgG in phosphate buffered saline (without Mg <sup>2+</sup> and Ca <sup>2+</sup> ), pH 7.4, 150mM NaCl, 0.02% sodium azide and 50% glycerol.
Storage	Store at -20°C

## Application Details

Western blotting: 1:1000

## Images



Western Blot analysis of lysates of Jurkat cell and Jurkat cell treated with LPS, using primary antibody at 1:1000 dilution.

---

Note: This product is for in vitro research use only and is not intended for use in humans or animals.