

eIF2B-ε (Phospho-Ser525) Antibody

Catalog No: #12551



Package Size: #12551-1 50ul #12551-2 100ul

Orders: order@signalwayantibody.comSupport: tech@signalwayantibody.com

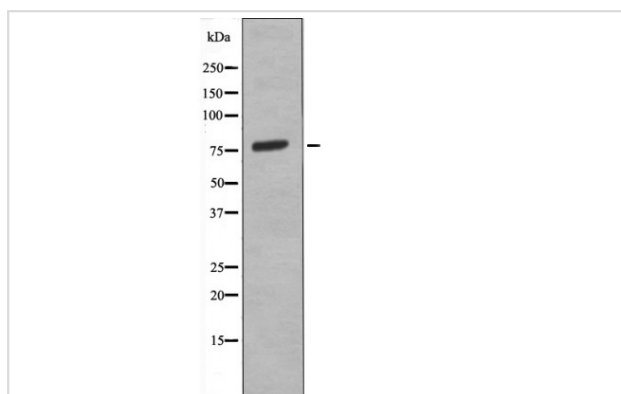
Description

Product Name	eIF2B-ε (Phospho-Ser525) Antibody
Host Species	Rabbit
Clonality	Polyclonal
Purification	Antibodies were produced by immunizing rabbits with synthetic phosphopeptide and KLH conjugates. Antibodies were purified by affinity-chromatography using epitope-specific phosphopeptide. Non-phospho specific antibodies were removed by chromatography using non-phosphopeptide.
Applications	WB
Species Reactivity	Hu Rt
Specificity	eIF2B-ε (Phospho-Ser525) Antibody detects endogenous levels of eIF2B-ε only when phosphorylated at Ser525
Immunogen Type	Peptide
Immunogen Description	A synthesized peptide derived from human eIF2B-ε (Phospho-Ser525)
Target Name	eIF2B-ε
Modification	Phospho
Other Names	EIF2B5, CACH, EIF2BE, EIF-2B, LVWM, CLE, EIF2Bepsilon
Accession No.	Swiss-Prot#: Q13144NCBI Gene ID: 8893
Target Species	human
Calculated MW	80kd
Concentration	1.0mg/ml
Formulation	Rabbit IgG in phosphate buffered saline (without Mg ²⁺ and Ca ²⁺), pH 7.4, 150mM NaCl, 0.02% sodium azide and 50% glycerol.
Storage	Store at -20°C

Application Details

Western blotting: 1:1000

Images



Western blot analysis eIF2B-ε (Phospho-Ser525) using K562 whole cell lysates

Note: This product is for in vitro research use only and is not intended for use in humans or animals.