

CD45 (Phospho-Tyr1216) Antibody

Catalog No: #12553



Package Size: #12553-1 50ul #12553-2 100ul

Orders: order@signalwayantibody.comSupport: tech@signalwayantibody.com

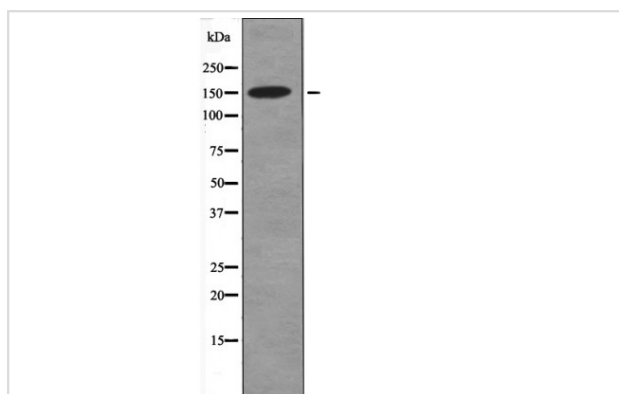
Description

Product Name	CD45 (Phospho-Tyr1216) Antibody
Host Species	Rabbit
Clonality	Polyclonal
Purification	Antibodies were produced by immunizing rabbits with synthetic phosphopeptide and KLH conjugates. Antibodies were purified by affinity-chromatography using epitope-specific phosphopeptide. Non-phospho specific antibodies were removed by chromatography using non-phosphopeptide.
Applications	WB
Species Reactivity	Hu
Specificity	CD45 (Phospho-Tyr1216) Antibody detects endogenous levels of CD45 only when phosphorylated at Tyr1216
Immunogen Type	Peptide
Immunogen Description	A synthesized peptide derived from human CD45 (Phospho-Tyr1216)
Target Name	CD45
Modification	Phospho
Other Names	PTPRC, B220, CD45R, CD45, gp180, Leukocyte common antigen, L-CA, Leucocyte common antigen, LY5, T200, T200 glycoprotein, T200 leukocyte common antigen, CD45 antigen, LCA
Accession No.	Swiss-Prot#: P08575NCBI Gene ID: 5788
Target Species	human
Calculated MW	150kd
Concentration	1.0mg/ml
Formulation	Rabbit IgG in phosphate buffered saline (without Mg ²⁺ and Ca ²⁺), pH 7.4, 150mM NaCl, 0.02% sodium azide and 50% glycerol.
Storage	Store at -20°C

Application Details

Western blotting: 1:1000

Images



Western blot analysis CD45 (Phospho-Tyr1216) using K562 whole cell lysates

Note: This product is for in vitro research use only and is not intended for use in humans or animals.