

RXR- $\alpha$  (Phospho-Ser260) Antibody

Catalog No: #12554

Package Size: #12554-1 50ul #12554-2 100ul

Orders: [order@signalwayantibody.com](mailto:order@signalwayantibody.com)Support: [tech@signalwayantibody.com](mailto:tech@signalwayantibody.com)

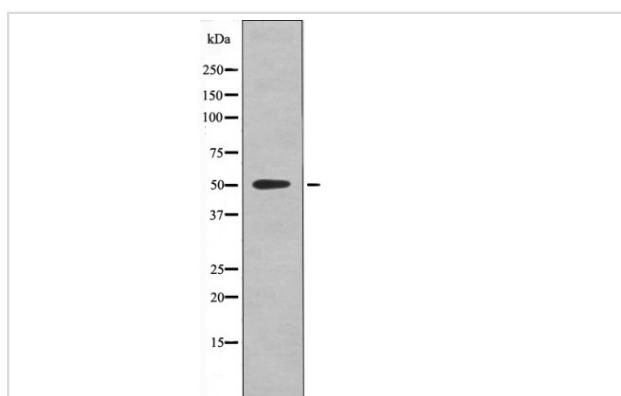
## Description

Product Name	RXR- $\alpha$ (Phospho-Ser260) Antibody
Host Species	Rabbit
Clonality	Polyclonal
Purification	Antibodies were produced by immunizing rabbits with synthetic phosphopeptide and KLH conjugates. Antibodies were purified by affinity-chromatography using epitope-specific phosphopeptide. Non-phospho specific antibodies were removed by chromatography using non-phosphopeptide.
Applications	WB
Species Reactivity	Hu Ms Rt
Specificity	RXR- $\alpha$ (Phospho-Ser260) Antibody detects endogenous levels of RXR- $\alpha$ only when phosphorylated at Ser260
Immunogen Type	Peptide
Immunogen Description	A synthesized peptide derived from human RXR- $\alpha$ (Phospho-Ser260)
Target Name	RXR- $\alpha$
Modification	Phospho
Other Names	RXRA, RXR-alpha, NR2B1, Retinoid X receptor alpha, Retinoid X receptor, alpha
Accession No.	Swiss-Prot#: P19793NCBI Gene ID: 6256
Target Species	human
Calculated MW	51kd
Concentration	1.0mg/ml
Formulation	Rabbit IgG in phosphate buffered saline (without Mg <sup>2+</sup> and Ca <sup>2+</sup> ), pH 7.4, 150mM NaCl, 0.02% sodium azide and 50% glycerol.
Storage	Store at -20°C

## Application Details

Western blotting: 1:1000

## Images

Western blot analysis RXR- $\alpha$  (Phospho-Ser260) using EPO treated COS7 whole cell lysates

---

Note: This product is for in vitro research use only and is not intended for use in humans or animals.