

Connexin 43 (Phospho-Ser279) Antibody

Catalog No: #12564



Package Size: #12564-1 50ul #12564-2 100ul

Orders: order@signalwayantibody.comSupport: tech@signalwayantibody.com

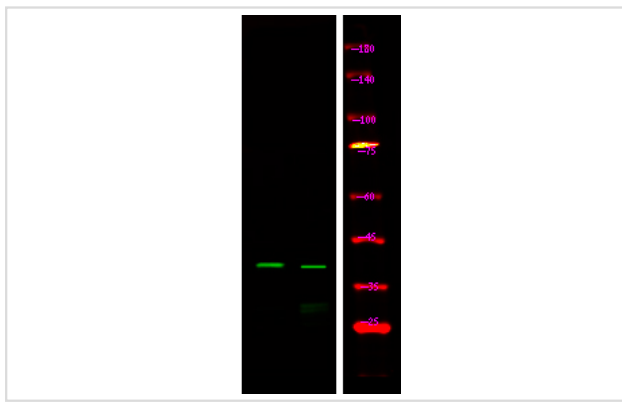
Description

Product Name	Connexin 43 (Phospho-Ser279) Antibody
Host Species	Rabbit
Clonality	Polyclonal
Purification	Antibodies were produced by immunizing rabbits with synthetic phosphopeptide and KLH conjugates. Antibodies were purified by affinity-chromatography using epitope-specific phosphopeptide. Non-phospho specific antibodies were removed by chromatography using non-phosphopeptide.
Applications	WB
Species Reactivity	Hu Ms Rt
Specificity	Connexin 43 (Phospho-Ser279) Antibody detects endogenous levels of Connexin 43 only when phosphorylated at Ser279
Immunogen Type	Peptide
Immunogen Description	A synthesized peptide derived from human Connexin 43 (Phospho-Ser279)
Target Name	Connexin 43
Modification	Phospho
Other Names	GJA1, Connexin-43, DFNB38, Connexin 43, Gap junction alpha-1 protein, GJAL, HSS, Gap junction protein alpha 1, ODDD, ODD, AVSD3, CX43, HLHS1, ODOD, SDTY3
Accession No.	Swiss-Prot#: P17302NCBI Gene ID: 2697
Target Species	human
Calculated MW	43kd
Concentration	1.0mg/ml
Formulation	Rabbit IgG in phosphate buffered saline (without Mg ²⁺ and Ca ²⁺), pH 7.4, 150mM NaCl, 0.02% sodium azide and 50% glycerol.
Storage	Store at -20°C

Application Details

Western blotting: 1:1000

Images



Western Blot analysis of lysates of HepG2 cell treated with 100ng/mL LPS for 30min (Left) and HepG2 cell (Right), using primary antibody at 1:1000 dilution.

Published Papers

el at., Cyclic AMP mediates ovine cumulus-oocyte gap junctional function via balancing connexin 43 expression and phosphorylationInEndocr
ConnectOn2023 Oct 12byYufen Zhao?1?2,?Erge Namei et al..PMID: 37855365, , (2023)
[PMID:37855365](#)

Note: This product is for in vitro research use only and is not intended for use in humans or animals.